

Bid Bulletin No. 1

**“Supply and Delivery of Office Furniture for the Office of Fair Trade
Enforcement Bureau and DTI Offices in the Bureau of Investments”
20-024**

November 3, 2020

This Bid Bulletin No. 1 is hereby issued to modify or amend the Bidding Documents.

Section VII. Technical Specifications

Please see attached Layout Plan and sample images of the Office Furniture with complete technical specifications.

For the guidance and information of all concerned.

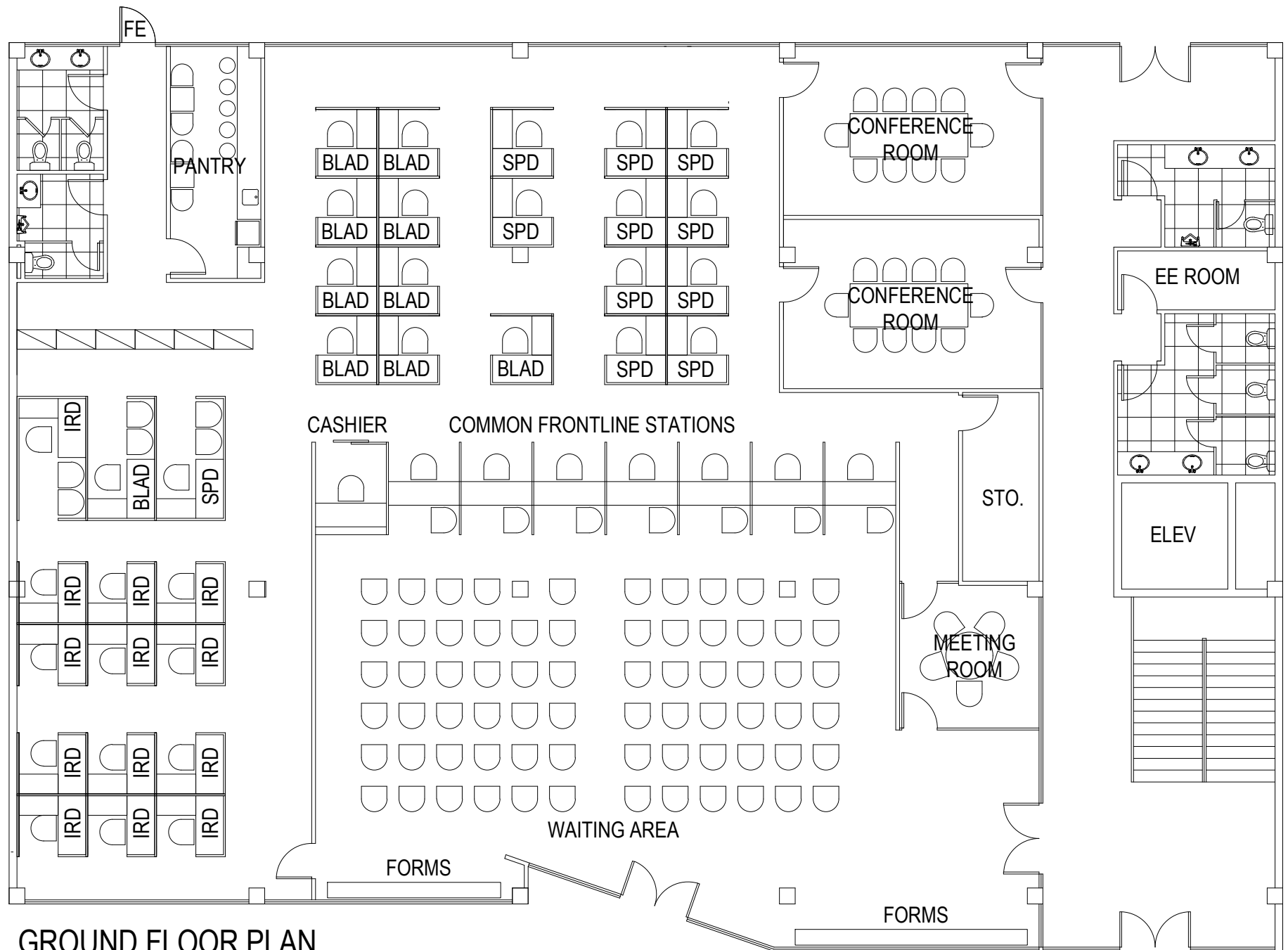
SGD.

MARY JEAN T. PACHECO

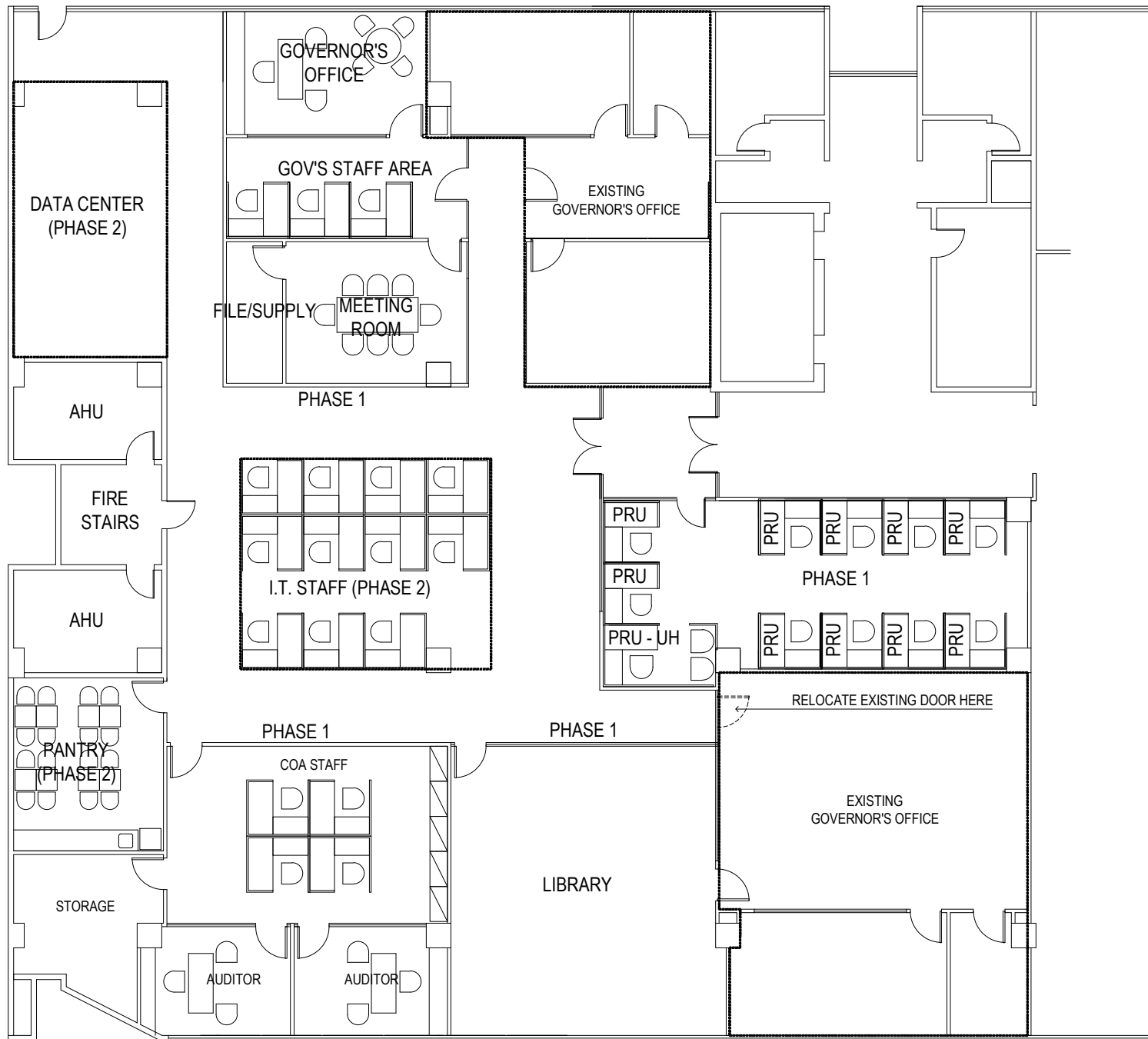
Assistant Secretary

Chairperson, DTI Bids and Awards Committee

BIDS AND AWARDS COMMITTEE

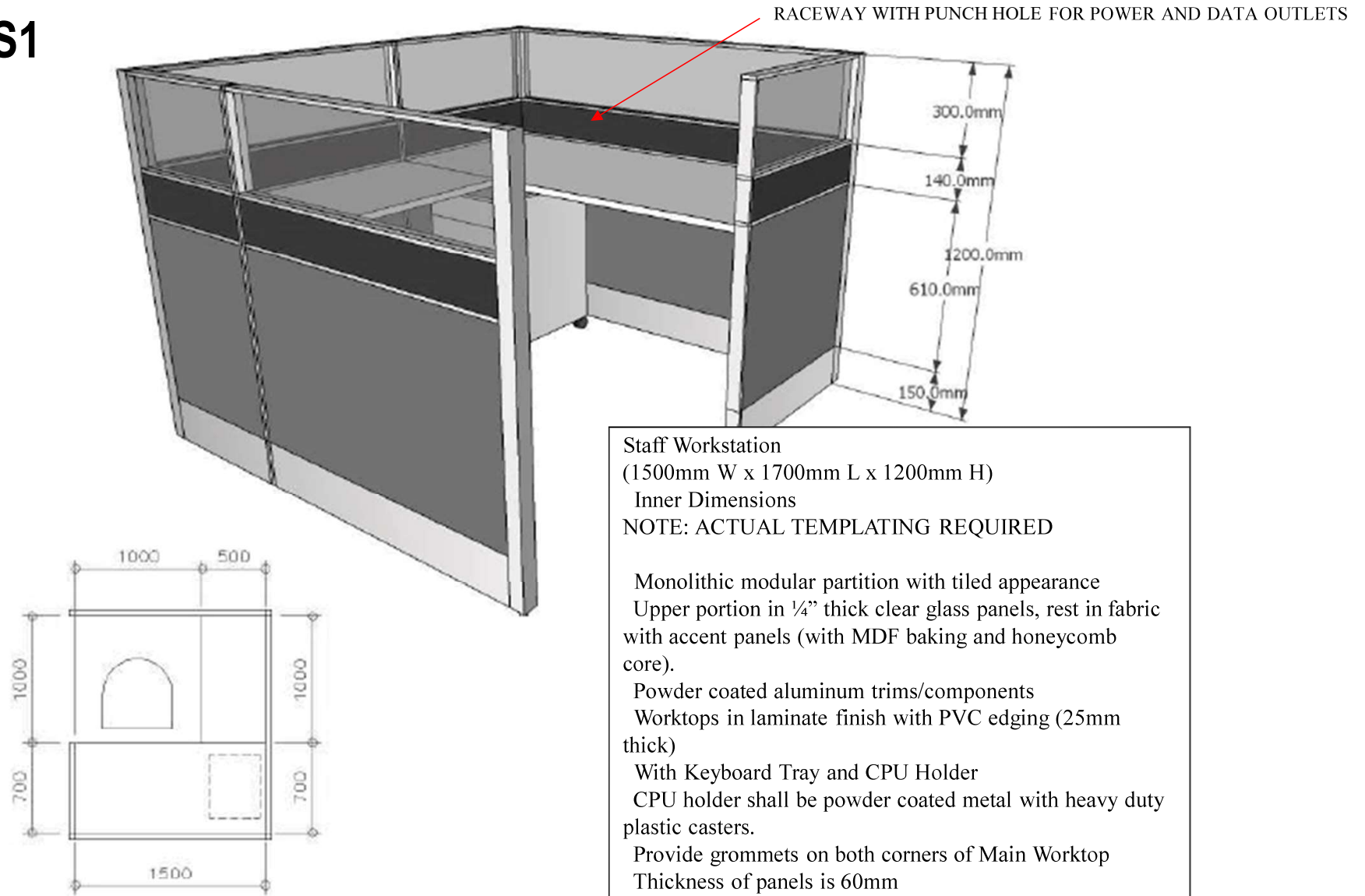


GROUND FLOOR PLAN
(FTEB)-10232020



DTI BOI 4TH FLOOR LAYOUT (VERSION 4)

WS1



Staff Workstation
(1500mm W x 1700mm L x 1200mm H)
Inner Dimensions
NOTE: ACTUAL TEMPLATING REQUIRED

Monolithic modular partition with tiled appearance
Upper portion in 1/4" thick clear glass panels, rest in fabric with accent panels (with MDF baking and honeycomb core).

Powder coated aluminum trims/components
Worktops in laminate finish with PVC edging (25mm thick)

With Keyboard Tray and CPU Holder
CPU holder shall be powder coated metal with heavy duty plastic casters.

Provide grommets on both corners of Main Worktop
Thickness of panels is 60mm

Color for approval

Supplier is required to present mock-up unit or show actual installation of similar specifications

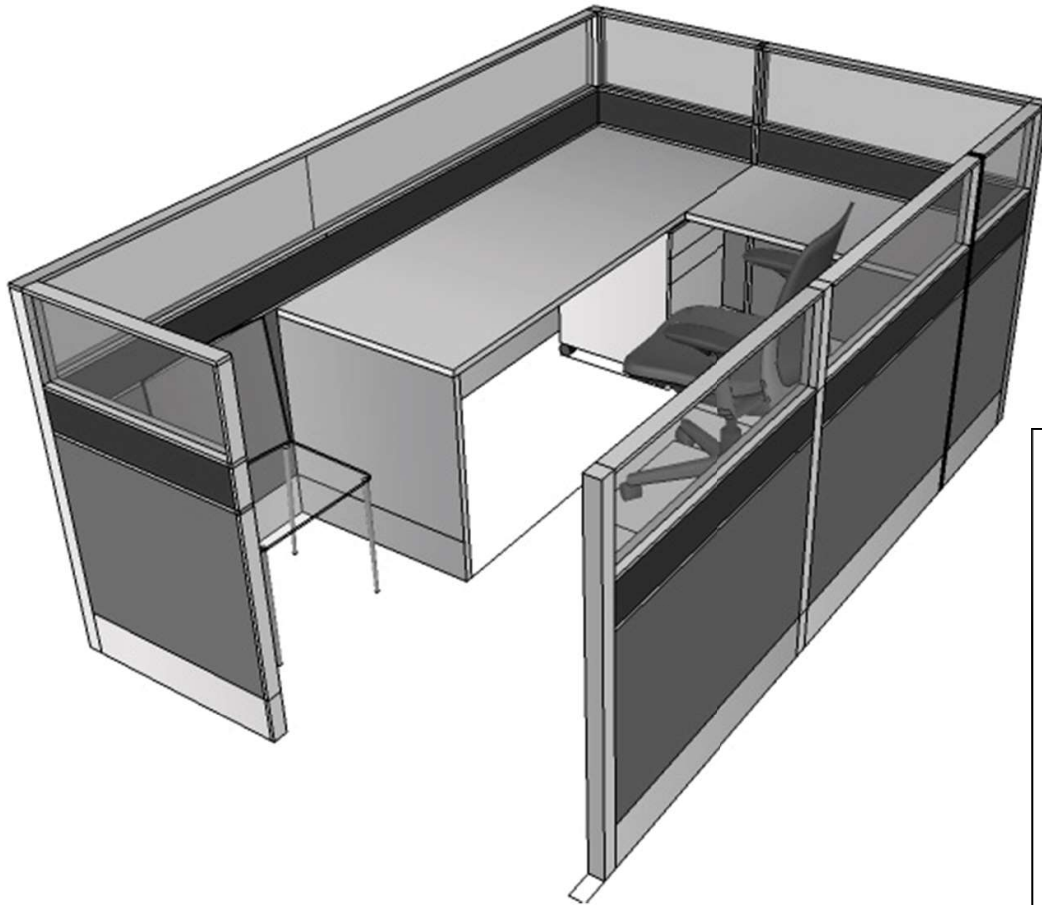
Mobile pedestal. - Gauge 20

- Powder coated Metal in charcoal gray color

- dim: 400W x 540D x 650H

WS2

RACEWAY WITH PUNCH HOLE FOR POWER AND DATA OUTLETS



Division Head Workstation
(1700mm W x 3050mm L x 1500mm H)
NOTE: ACTUAL TEMPATING REQUIRED

Monolithic modular partition with tiled appearance
Upper portion in ¼" thick clear glass panels, rest in fabric with accent panels(with MDF baking and honeycomb core).
Powder coated aluminum trims/components
Worktops in laminate finish with PVC edging (25mm thick)
With Keyboard Tray and CPU Holder
CPU holder shall be powder coated metal with heavy duty plastic casters.
Provide grommets on both corners of Main Worktop
Thickness of panels is 60mm
Disregard color shown in picture
Supplier is required to present mock-up unit or show actual installation of similar specifications
Mobile pedestal is to be supplied separately.

E1

E1: STAFF CHAIR (Low Back Ergonomic Chair)

- Low back ergonomic chair with arms
- Complete with gas lift and tilting mechanism
- Base and casters in heavy duty propylene plastic
- Backrest fabric in accent color
- Picture is representation only

E2

E2: DIVISION HEAD / MEETING ROOM CHAIR (Mid Back Ergonomic Chair)

- Mid back ergonomic chair with arms
- Complete with gas lift and tilting mechanism
- Base and casters in heavy duty propylene plastic
- Backrest fabric in accent color
- Picture is representation only

E4

E4: A/DIR, DIR & UP CHAIRS (High Back Ergonomic Chair)

- High back ergonomic chair with arms
- Complete with gas lift and tilting mechanism
- Base and casters in heavy duty propylene plastic
- Backrest fabric in accent color
- Picture is representation only



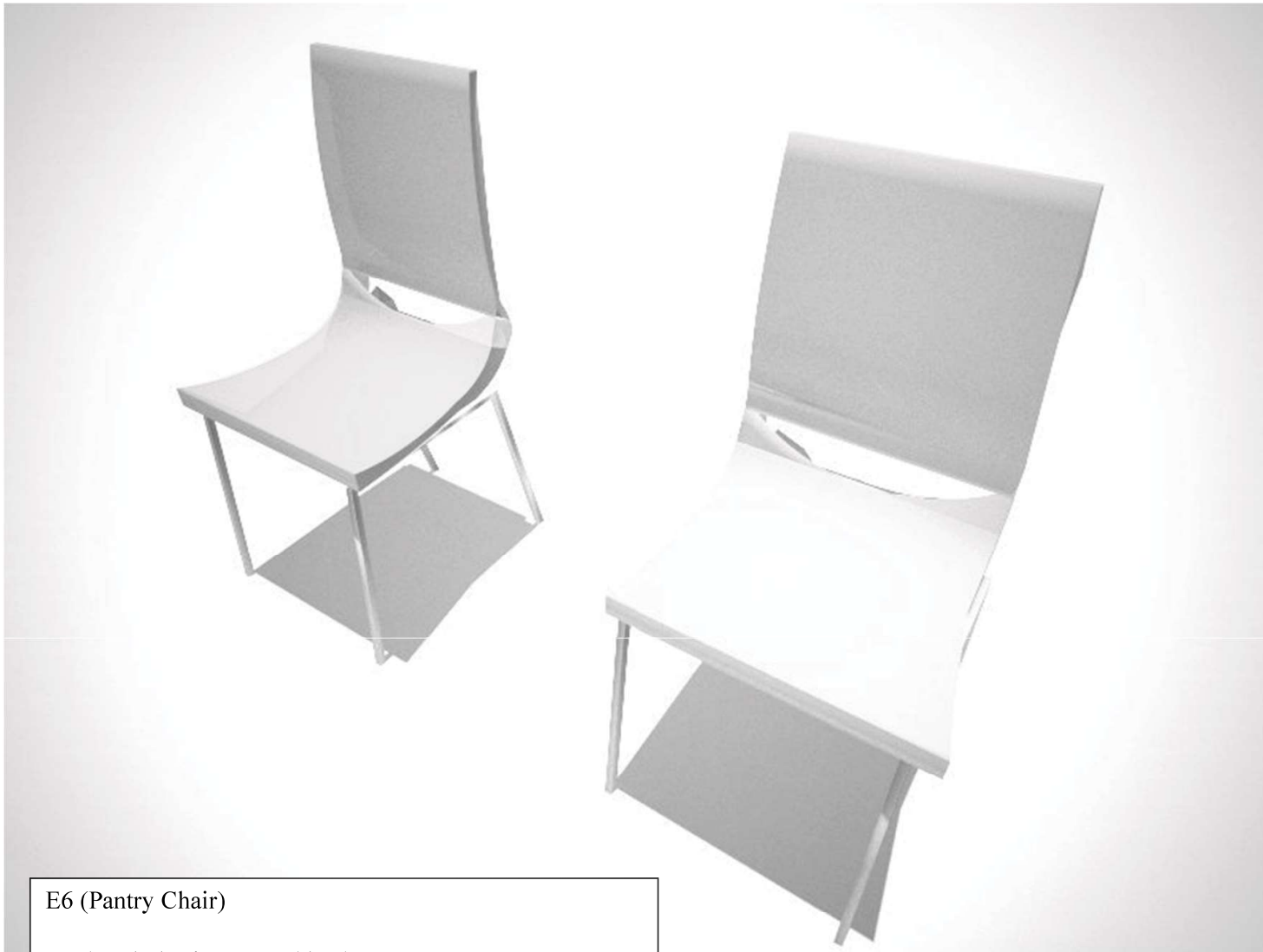
E3

E3 (Ergonomic Guest Chair)

- Low back ergonomic chair with armrests
- Fixed legs (sled type optional)
- Backrest fabric in accent color
- Picture is representation only



E6



E6 (Pantry Chair)

Colored plastic seat and backrest
Metal framing in polished chrome finish
Fully stackable
Disregard color shown in picture

T1

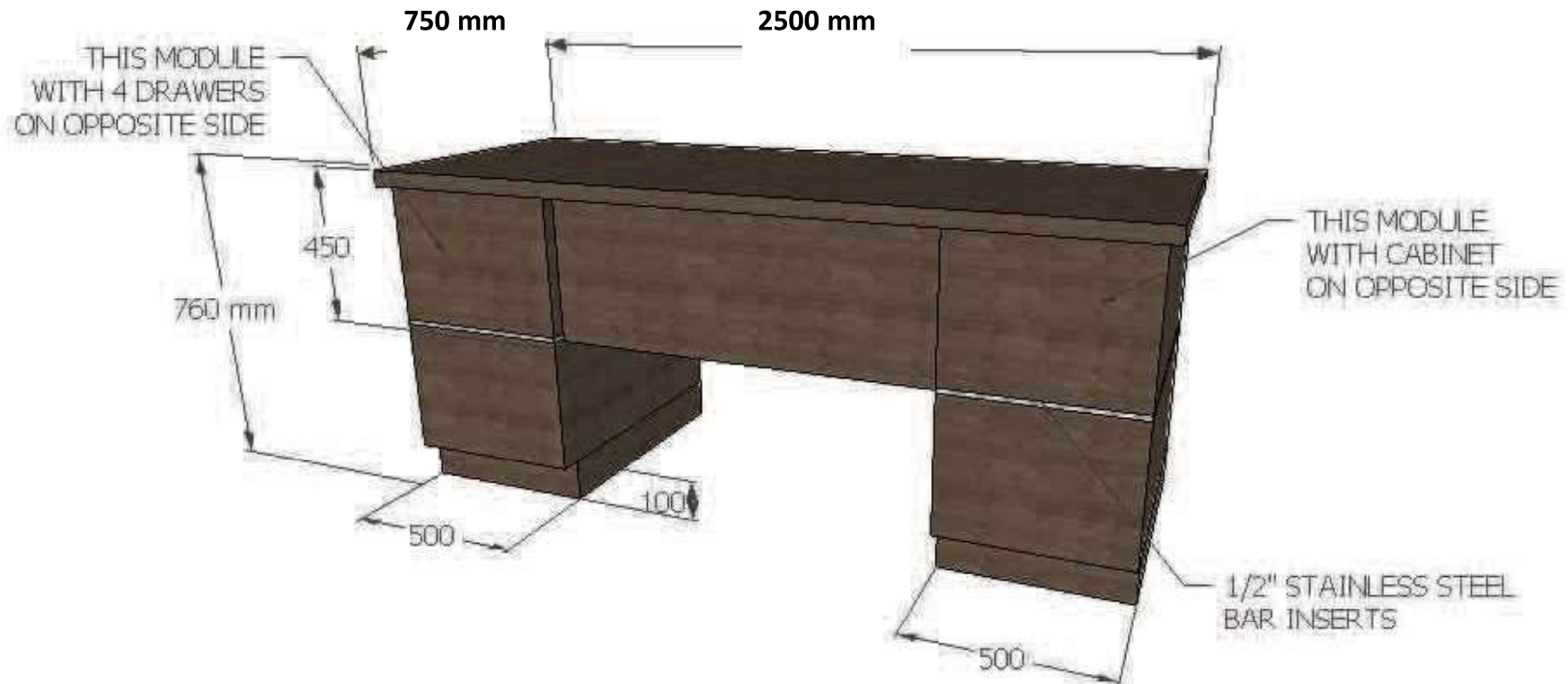
T1(USEC TABLE)

Solid wood panels/components in oil stain finish

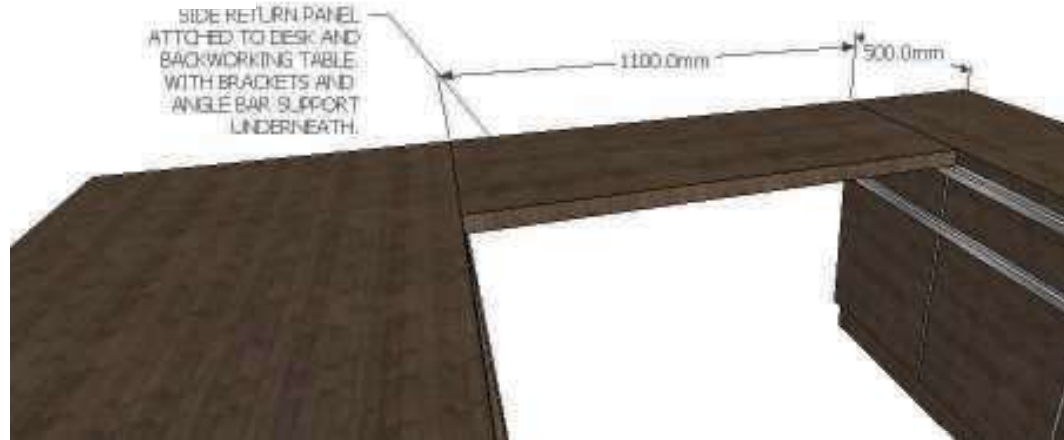
See drawing for dimensions and specifications

Table top laminate thickness should be 25mm

Provide with 1/4 thick painted glass table top



T2



T2 (USEC SIDE & BACKWORKING TABLE)

Solid wood panels & components in oil stain finish

See drawing for dimensions and specifications

Table top laminate thickness should be 25mm

Provide with ¼ thick painted glass table top

Use full aluminum handgrabs



PARTICLE BOARD PANELS
IN WOOD LAMINATE FINISH
WITH POSTFORMED COUNTERTOP
- 6 CABINET MODULES, DOORS WITH
CONCEALED HINGES AND PVC EDGING.
- 5 DRAWERS WITH FULL EXTENSION GUIDES

T7

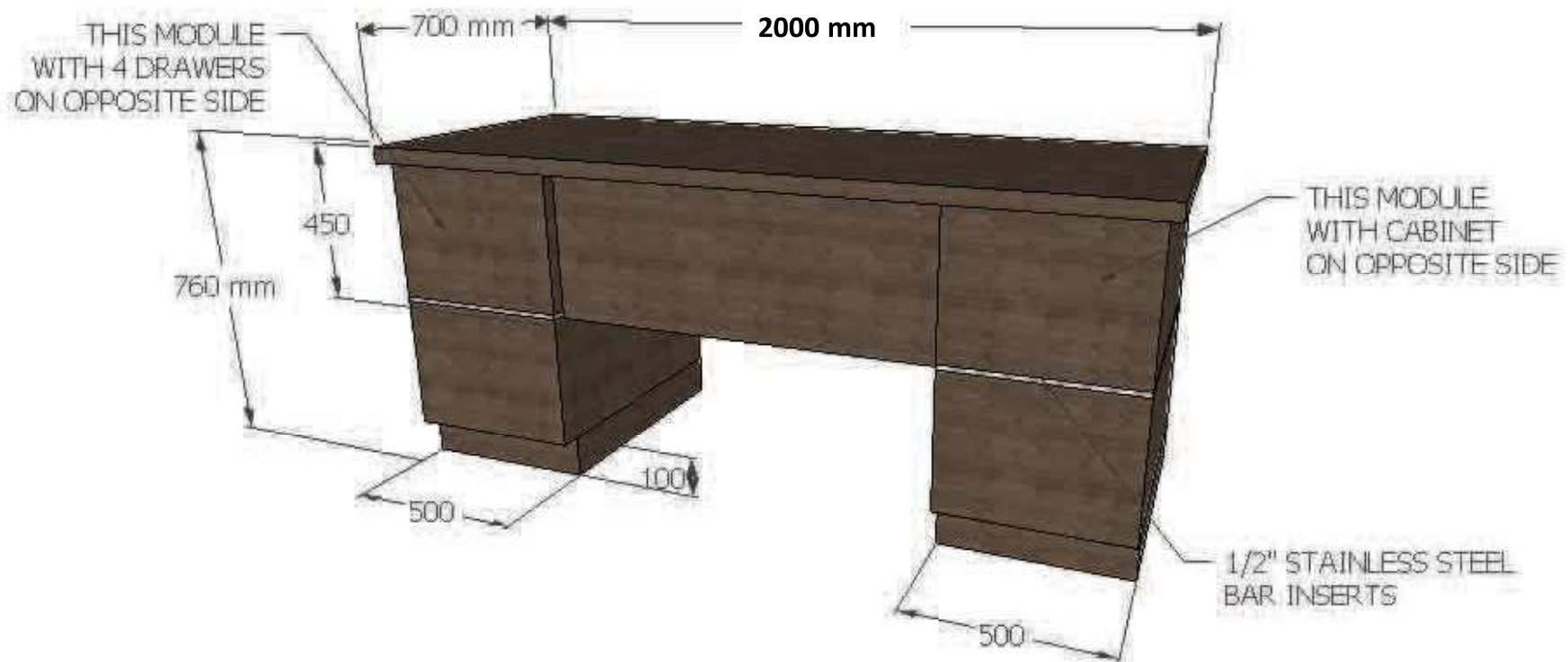
T7 (DIRECTOR'S TABLE)

Solid wood panels/components in oil stain finish

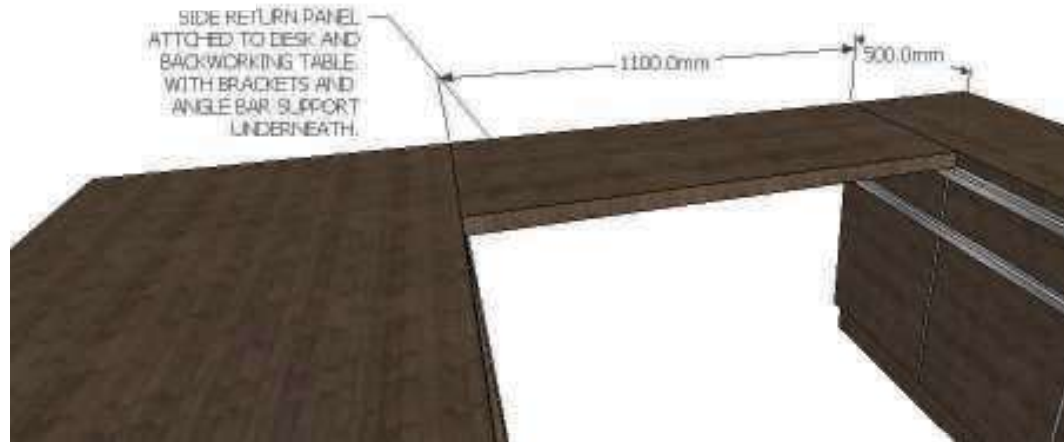
See drawing for dimensions and specifications

Table top laminate thickness should be 25mm

Provide with 1/4 thick painted glass table top



T8



T8 (DIRECTOR'S SIDE & BACKWORKING TABLE)

Solid wood panels & components in oil stain finish

See drawing for dimensions and specifications

Table top laminate thickness should be 25mm

Provide with ¼ thick painted glass table top

Use full aluminum handgrabs



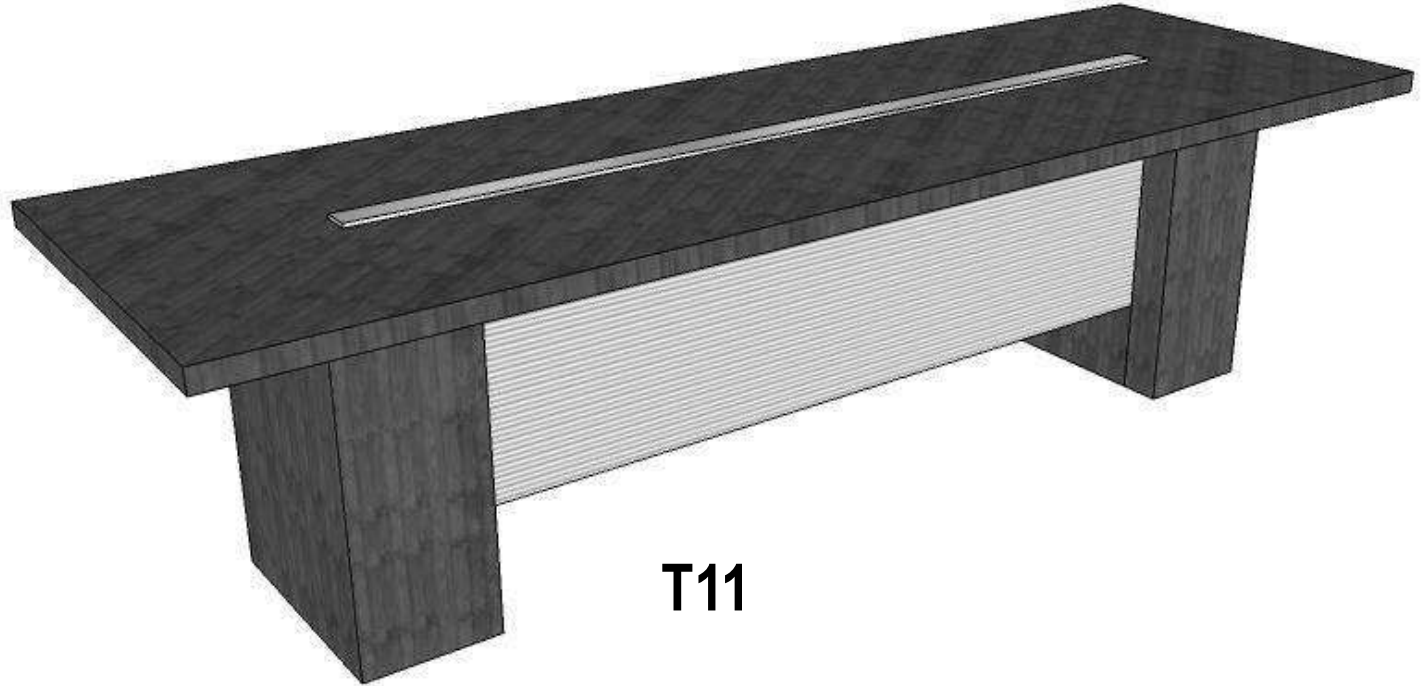
PARTICLE BOARD PANELS
IN WOOD LAMINATE FINISH
WITH POSTFORMED COUNTERTOP
- 6 CABINET MODULES, DOORS WITH
CONCEALED HINGES AND PVC EDGING.
- 5 DRAWERS WITH FULL EXTENSION GUIDES

T9

T9 (Director's Meeting Table)

For Meeting Table - 25mm particle board table top in
wood simulated laminate finish
Powder coated metal base
1000mm (Dia) x 760mm (H)





T10

T11

T10 (Meeting Room Table)

Combination solid wood and plywood panel construction in wood veneer finish

Note reeded aluminum finish laminate for center of base

Provide wire management at the center of table top

T5 Dimensions 1000mmW x 1600mmL x 760mmH

Conduct template before execution

Table top should be 50mm thick

T11 (Conference Room Table)

Combination solid wood and plywood panel construction in wood veneer finish

Note reeded aluminum finish laminate for center of base

Provide wire management at the center of table top

T5 Dimensions 1100mmW x 3200mmL x 760mmH

Conduct template before execution

Table top should be 50mm thick