

Bid Bulletin No. 2

**“Supply and Delivery of Event Uniform for the Expo Secretariat Staff and Member of the Philippine Organizing Committee (POC) for the Philippine Participation in Expo 2020 Dubai”
20-025**

November 24, 2020

This Bid Bulletin No. 2 is hereby issued to modify or amend the Bidding Documents.

1. Schedule of Proceedings

Activity	Schedule
Pre-bid Conference	<p>December 2, 2020, 9:30AM for Pre-Bid Conference through video conference with the following details:</p> <p>Zoom Meeting Details: https://zoom.us/j/98644887968?pwd=MWNJZ3o3Z2toakdLVjlnanNoWTRidz09</p> <p>Meeting ID: 986 4488 7968 Passcode: 763837</p>

2. Performance Security

Form of Performance Security	Amount of Performance Security (Not less than the Percentage of the Total Contract Price)
(a) Cash or cashier's/manager's check issued by a Universal or Commercial Bank.	Five percent (5%)
(b) Bank draft/guarantee or irrevocable letter of credit issued by a Universal or Commercial Bank: Provided, however, that it shall be confirmed or authenticated by a Universal or Commercial Bank, if issued by a foreign bank.	
(c) Surety bond callable upon demand issued by a surety or insurance company duly certified by the Insurance Commission as authorized to issue such security.	Thirty percent (30%)

Page 1 of 3

BIDS AND AWARDS COMMITTEE

2. Inquiry regarding the warranty

The end-user only requires the winning bidder to do alteration, if any, within seven (7) working days from the end-user's notification.

3. Section VII. Technical Specifications

3.1. Submission of fabric materials and prototypes (4 sets only) of the following will be part of the Post-Qualification:

- VIP Male Gala & 1VIP Female;
- 1 Corporate Attire for Female Staff; and
- 1 for Male Staff

3.2. Can we use imported thread/yarns, knitting or weaving for the gala and uniforms?

- Yes, for as long as certified as free from any harmful chemical and harmless for human health by a recognized private organization and PTRI's determination of the amount of formaldehyde in textiles. Use of 100% local materials **may** be used as applique, or decorative patches to embellish the look of the gala, corporate uniforms, etc.
PTRI Certification is required to validate if the fabric is locally produced in the Philippines.

3.3. In observance of social distancing during covid-19, how do we arrange actual measurement of the VIPs/officials especially those who are based in Dubai?

- No need to conduct body measurement in Dubai. Measurement can be sent from Dubai or Expo Secretariat to schedule the measurement when VIPs & Staff from Dubai visit Manila.

3.4. Is the total contract price includes the travelling expenses of the Service Provider Staff going to Dubai?

- Yes, any *travelling expenses, if any, and only when necessary* is included in the contract price.

3.5. What is the exact date of wearing and timeline tasks so we can plan accordingly?

- As soon as the appointment of Winning Bidder is announced in December 2020, preparation and production shall start in the middle of December until April 2021. Delivery date is on or before 31 May 2021 including fitting/alteration if any.

3.6. Please see attached approved designs.

- a. Ezra Design Approved - Annex A
- b. Helix Blue Shirt Design – Annex B
- c. Boat Design – Annex C

d. White T-shirt Design – Annex D

For the guidance and information of all concerned.

SGD.

MARY JEAN T. PACHECO

Assistant Secretary

Chairperson, DTI Bids and Awards Committee





PHILIPPINES
EXPO 2020 DUBAI

EZRA COUTURE

APPROVED DESIGNS for VIPs

(Commissioner General, Alternate Commissioner General, Ambassador
, Consul General & DTI Excom/HOAs)

COMMISSIONER GENERAL
VIP MALE ATTIRE



ALTERNATE COMMISSIONER GENERAL
VIP FEMALE ATTIRE

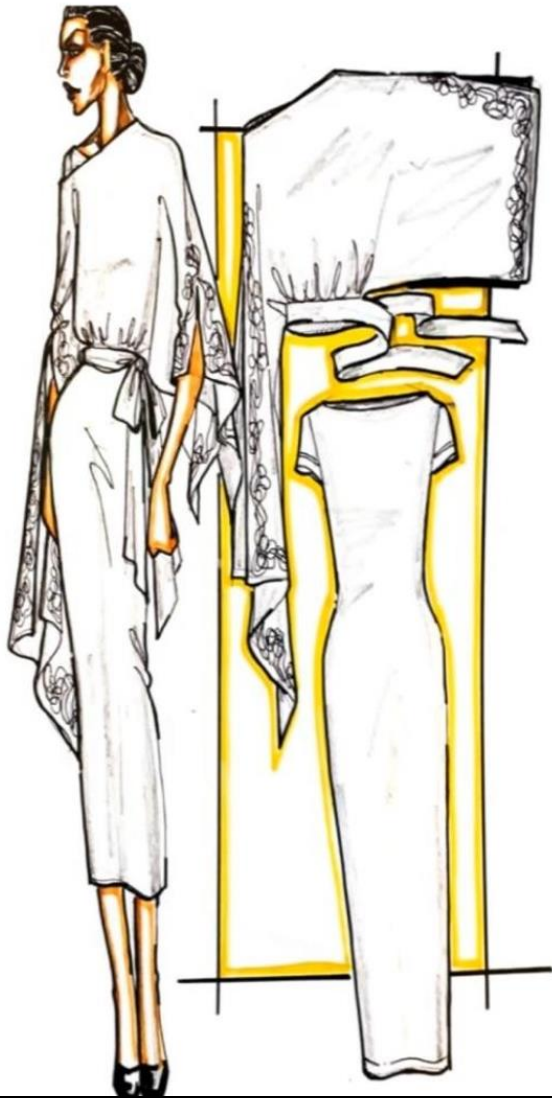


PHILIPPINE AMBASSADOR, UAE

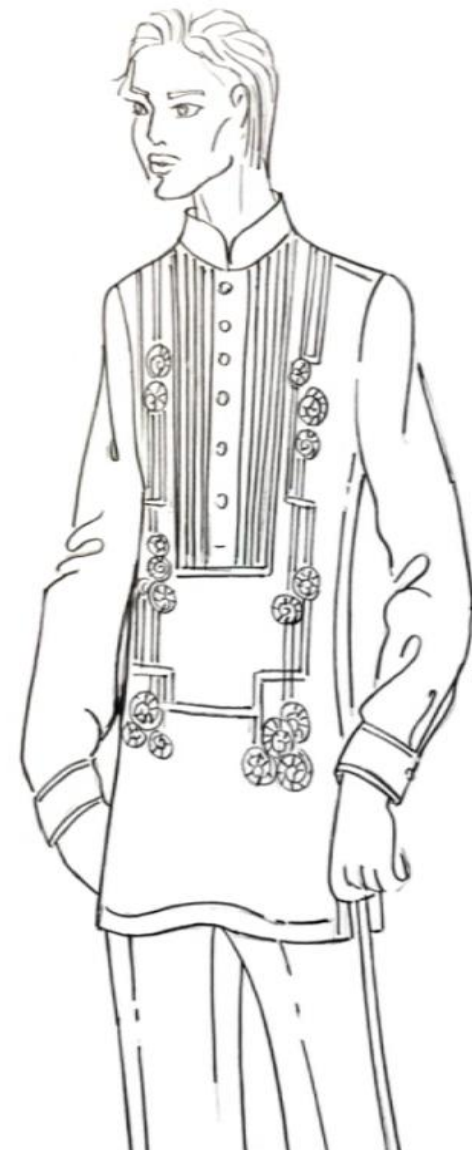


PHILIPPINE CONSULATE GENERAL
DUBAI, UAE





FOR DTI EXECUTIVE COMMITTEE
VIP FEMALE ATTIRE



FOR DTI EXECUTIVE COMMITTEE
VIP MALE ATTIRE



EZRA COUTURE

APPROVED DESIGNS for STAFF
as of 21 October 2020

GALA
UNIFORM
FOR FEMALE
STAFF



WEEKDAY
CORPORATE
ATTIRE FOR
FEMALE
STAFF



WEEKEND
CASUAL ATTIRE
FOR FEMALE
STAFF



Only the shrug jacket
/shawl pocket



GALA UNIFORM FOR MALE STAFF



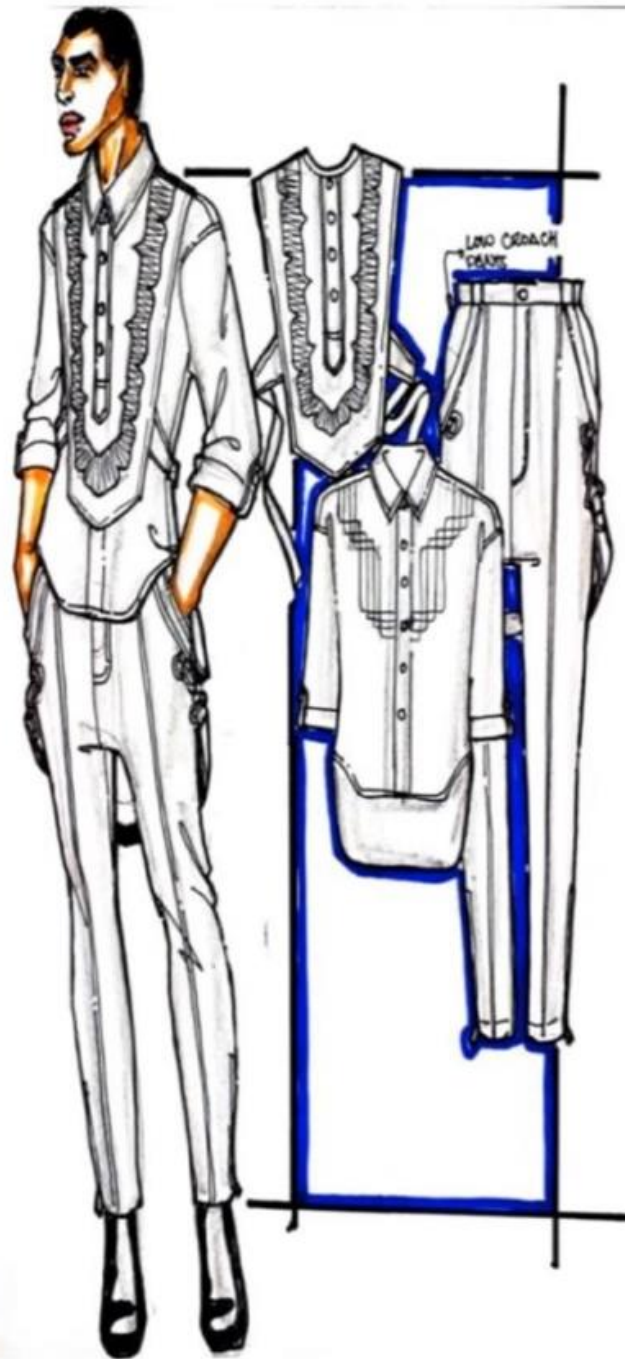
Only the coat
with inner polo



WEEKDAY
CORPORATE
ATTIRE FOR
MALE STAFF



WEEKEND
CASUAL
ATTIRE FOR
MALE STAFF



ANNEX B



PANTONE
REFLEX BLUE



GOLD



B-FRONT



B-BACK

Full sublimation print image

TO VIEW THE FULL SUBLIMATION PRINT IMAGE & REGISTRATION MARKS:
Hide the t-shirt outline
"Crop Guide<Clipping Path>
Layer.

Print image size to vary depending on the t-shirt's sizes.
T-shirt view with the "Crop Guide on" is the visual approximate guide for the graphics' /image's dimension per t-shirt size.

Full sublimation print on white Dri-Fit shirt

White letters & sailboat illustration in "Subli Finishing Foil (light silver) overprint

<https://www.forever-ots.com/product/subli-finishing-foil/>

<https://youtu.be/b-8Cy4BBOWA>

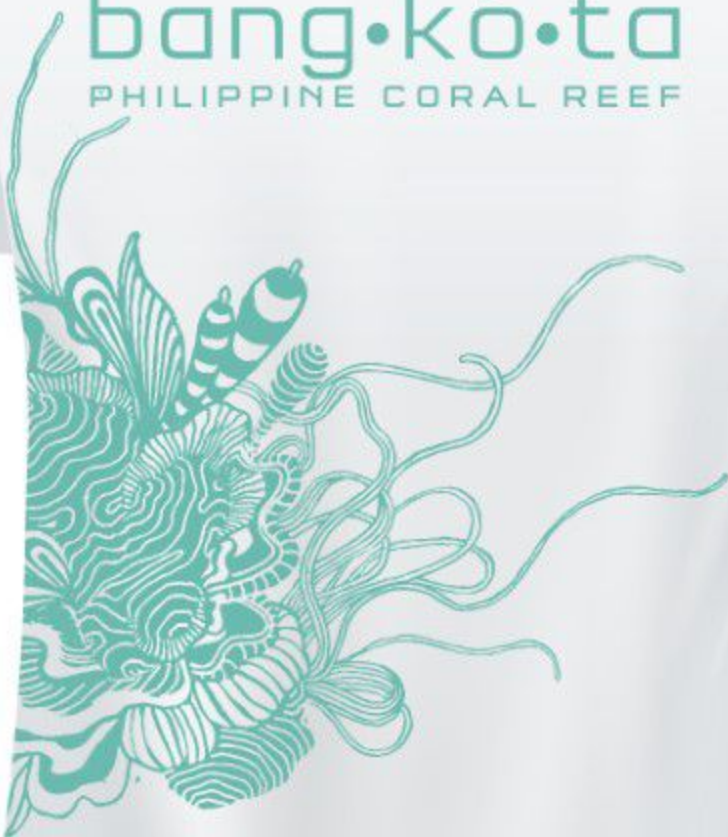


FRONT PRINT

BACK PRINT

SUBLIMATION
FULL
PRINT

bang.kó.ta
PHILIPPINE CORAL REEF



with small logo
at the BACK NAPE
part

