



Revised Category I - IV

BUSINESS ESTABLISHMENTS OR ACTIVITIES ALLOWED TO OPERATE

**in areas declared under Enhanced Community Quarantine
(ECQ), Modified ECQ, General Community Quarantine (GCQ),
and Modified GCQ**

Pursuant to the Revised Omnibus Guidelines on Community
Quarantine dated 22 May 2020 amending for the purpose
Memorandum Circular 20-22, s. 2020

Agriculture, Forestry, and Fisheries

ECQ	100%
MECQ	100%
GCQ	100%
MGCQ	100%



Manufacturing of Essential Goods

Food and Beverages (only non-alcoholic drinks)

ECQ	50 - 100% *
MECQ	100%
GCQ	100%
MGCQ	100%



*may increase if supply level warrants higher capacity; as may be approved by the DTI

Manufacturing of Essential Goods

Essential and Hygiene Products: soap, detergents, shampoo, and conditioners; diapers, feminine hygiene products, toilet papers, wet wipes; disinfectants

ECQ	50 - 100%*
MECQ	100%
GCQ	100%
MGCQ	100%



*may increase if supply level warrants higher capacity; as may be approved by the DTI

Manufacturing of Essential Goods

Medicines and Vitamins

ECQ	100%
------------	------

MECQ	100%
-------------	------

GCQ	100%
------------	------

MGCQ	100%
-------------	------



Manufacturing of Essential Goods

Medical Products such as Personal Protective Equipment (PPEs), Masks, Gloves, Others; medical supplies, devices and equipment, including suppliers of input, packaging and distribution

ECQ

100%

MECQ

100%

GCQ

100%

MGCQ

100%



Manufacturing of Essential Goods

Pet Food, Feeds, and Fertilizer

ECQ

50%

MECQ

100%

GCQ

100%

MGCQ

100%



Essential Retail

Such as groceries, markets, convenience stores, drug stores

ECQ	50%
MECQ	100%
GCQ	100%
MGCQ	100%



Food Preparation

Insofar as take-out and delivery services

ECQ

50%

MECQ

100%

GCQ

100%

MGCQ

100%



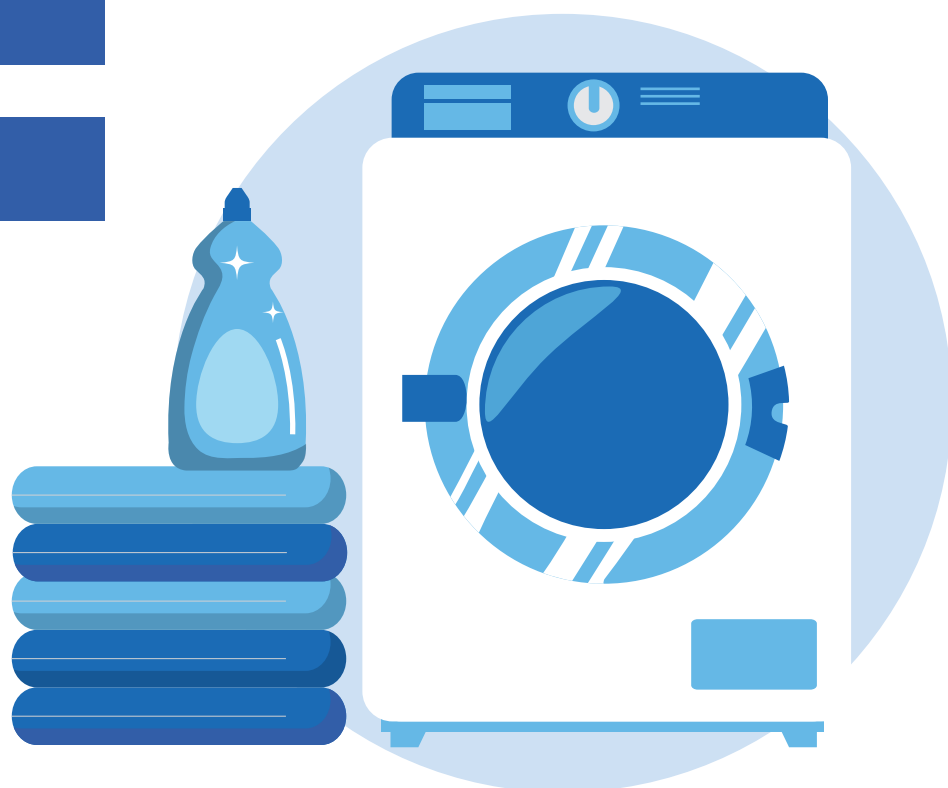
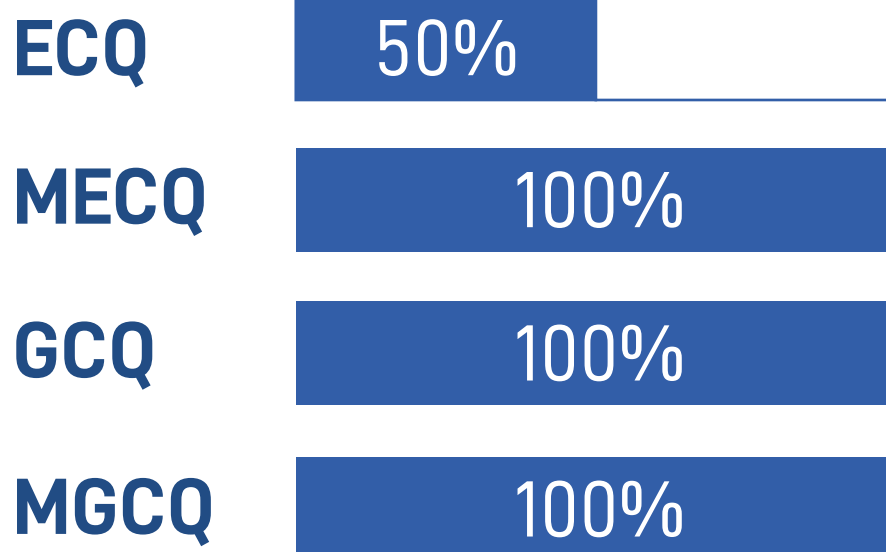
Water-Refilling Stations

ECQ	50%
MECQ	100%
GCQ	100%
MGCQ	100%



Laundry Services

Including self-service



Public and Private Hospitals

ECQ

100%

MECQ

100%

GCQ

100%

MGCQ

100%



Health, Emergency, and Frontline Services

Such as dialysis centers, chemotherapy centers, and the like

ECQ	100%
MECQ	100%
GCQ	100%
MGCQ	100%



Other Medical, Dental, Rehabilitation and Optometry Clinics, Non-Aesthetic Dermatological Clinics, EENT

Provided there is strict observance of infection prevention and control protocols, provided further that dental procedures shall be limited to emergency cases only and that the wearing of PPE by dentists and attendants shall be mandatory. Home service therapy for Persons with Disabilities (PWD) shall be allowed.

ECQ

skeleton

MECQ

100%

GCQ

100%

MGCQ

100%



Logistics Service Providers

Cargo handling, warehousing, trucking, freight forwarding, and shipping line

ECQ

100%

MECQ

100%

GCQ

100%

MGCQ

100%



Delivery and Courier Services

Whether in-house or outsourced transporting food, medicine, or other essential goods, including clothing, accessories, hardware, house wares, school and office supplies, as well as pet food and other veterinary products

ECQ

100%

MECQ

100%

GCQ

100%

MGCQ

100%



Water Supply and Sanitation Services and Facilities

Including waste disposal services, as well as property management and building utility services

ECQ

skeleton

MECQ

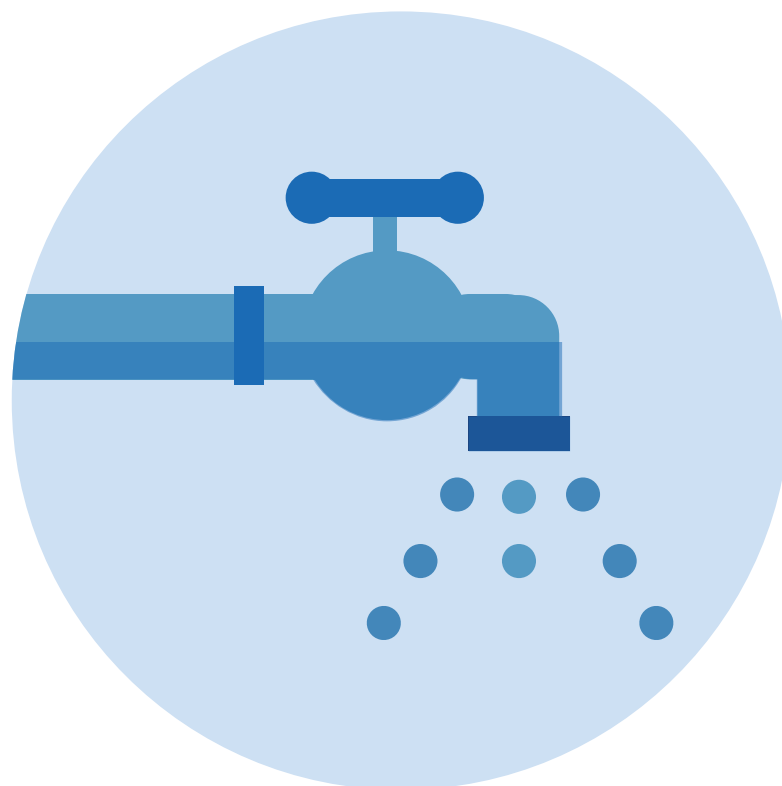
100%

GCQ

100%

MGCQ

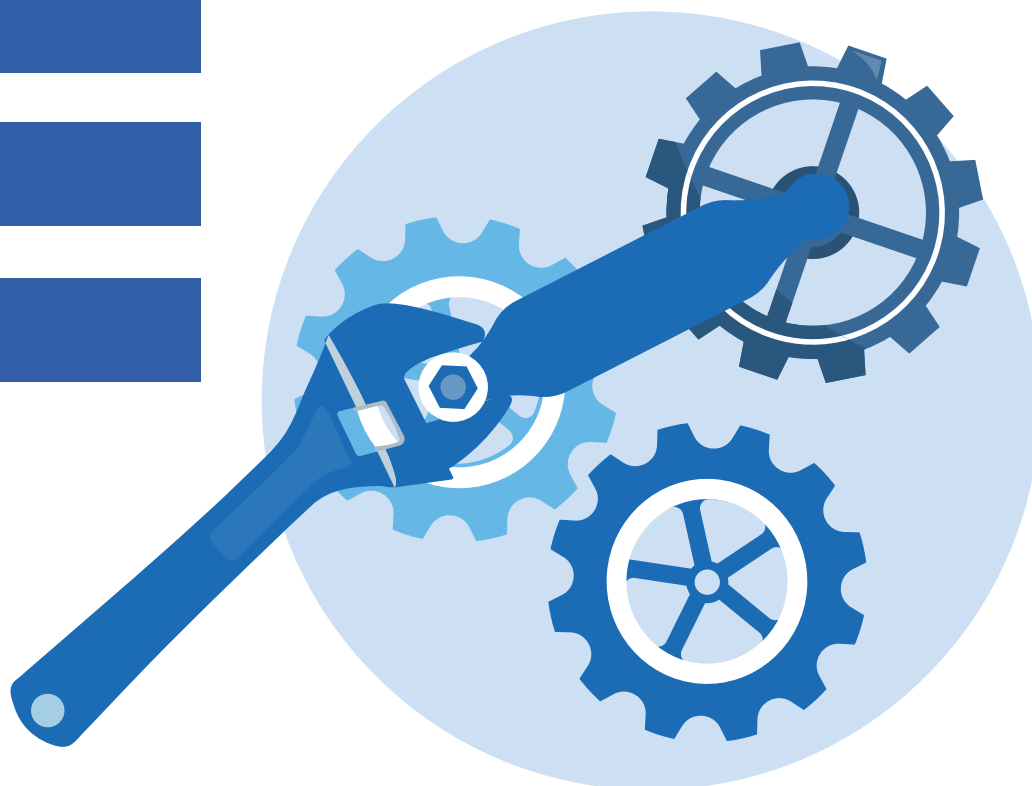
100%



Establishments Engaged in Repair and Maintenance of Machinery and Equipment

Including those engaged in the repair of computers and household fixtures and equipment

ECQ	skeleton
MECQ	100%
GCQ	100%
MGCQ	100%



Telecommunications Companies

Such as ISPs, cable providers, telco third-party contractors

ECQ

skeleton

MECQ

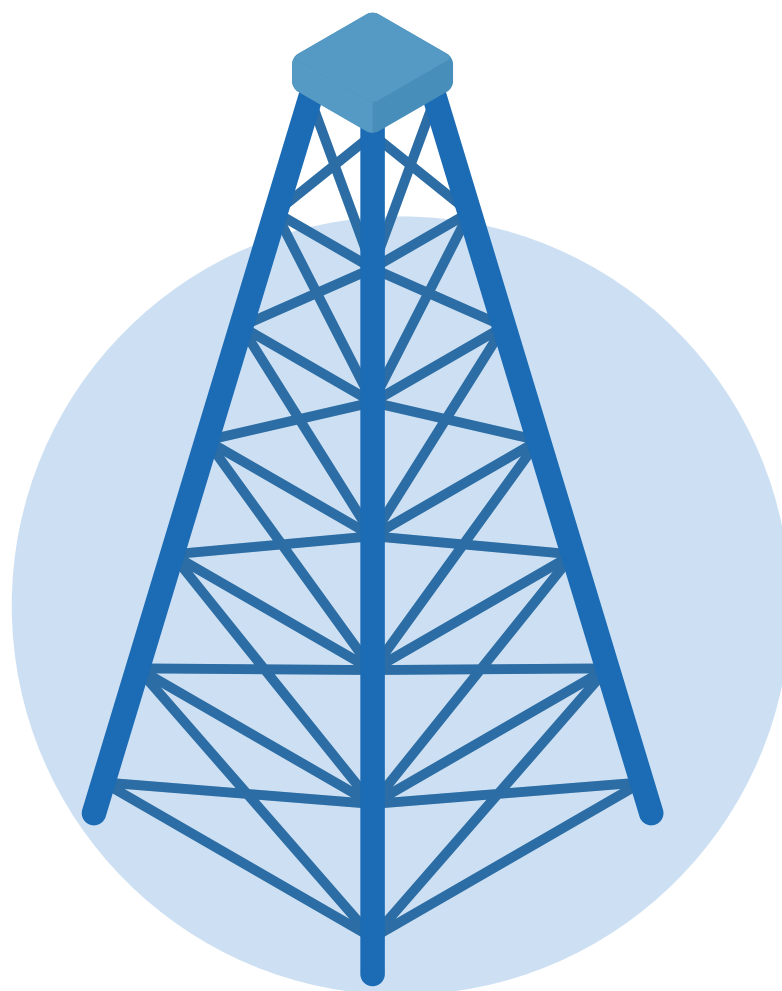
100%

GCQ

100%

MGCQ

100%



Energy and Power Companies

Including third-party contractors; across transmission, distribution, maintenance, retail, exploration, operations, trading and delivery of raw materials, such as refineries and depots

ECQ

skeleton

MECQ

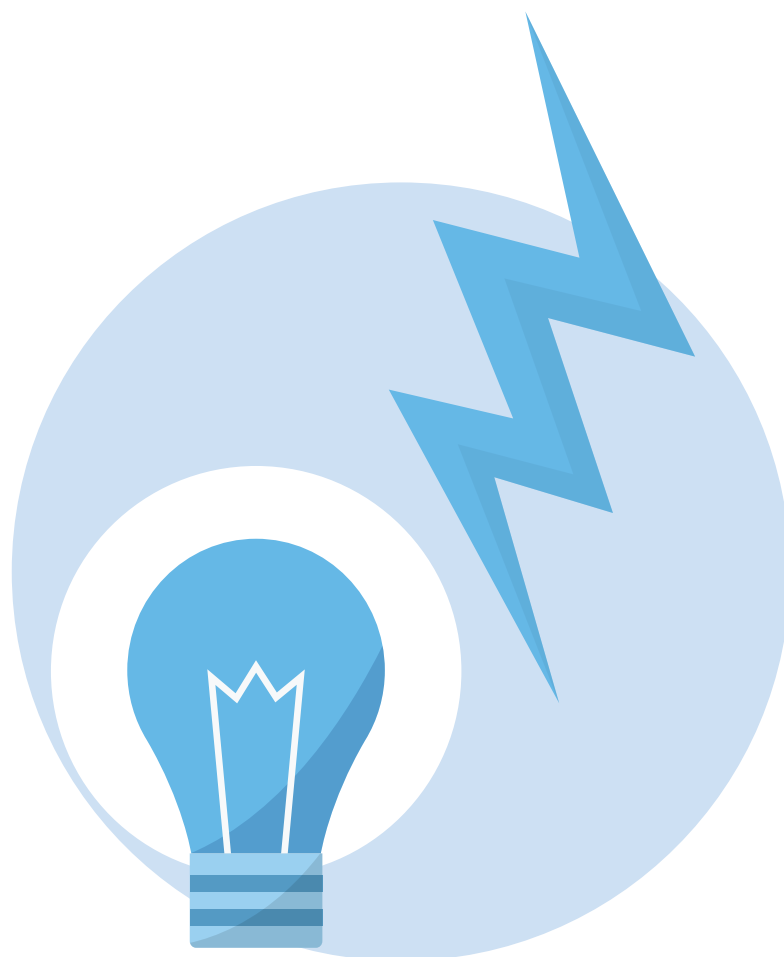
100%

GCQ

100%

MGCQ

100%



Gasoline Stations

ECQ

skeleton

MECQ

100%

GCQ

100%

MGCQ

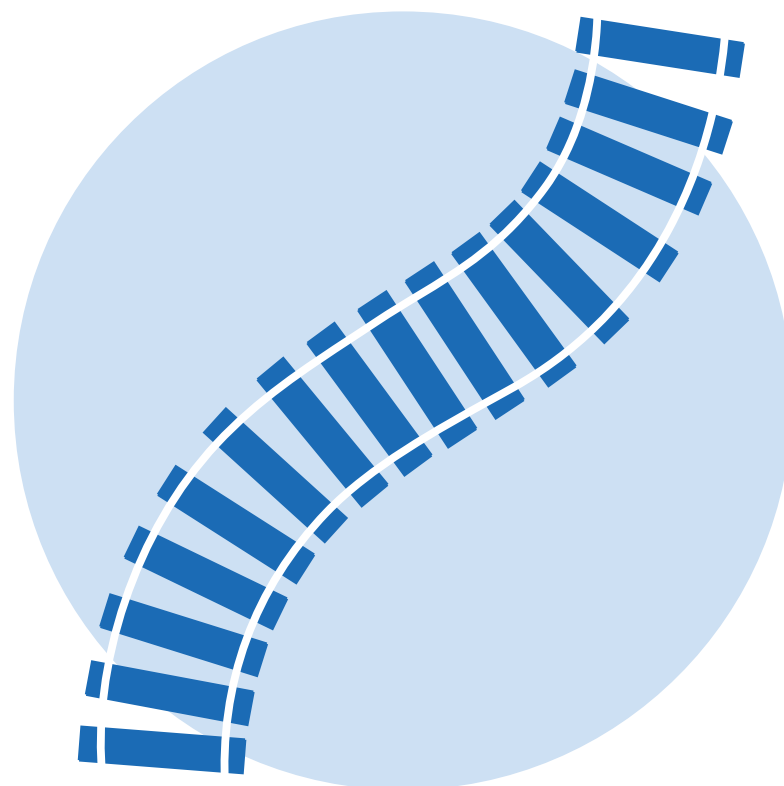
100%



Workers accredited by the Department of Transportation (DOTr)

to work on utility relocation works, and specified limited works across thirteen (13) railway projects, including replacement works for the Metro Manila Rail Transit (MRT) System Line 3

ECQ	skeleton *
MECQ	100%
GCQ	100%
MGCQ	100%



*with on-site or near-site accommodations and/or point-to-point shuttle services whenever applicable

Airline and Aircraft Maintenance

Pilots and crew, and employees of aviation schools for purposes of the pilot's recurrent training for flight proficiency and type rating using simulator facilities; and ship captains and crew, including shipyard operations and repair

ECQ

skeleton

MECQ

100%

GCQ

100%

MGCQ

100%



Public and Private Construction Projects that are Essential

i.e., quarantine and isolation facilities for Persons Under Monitoring (PUMs), suspect and confirmed COVID-19 patients, facilities for the health sector including those dealing with PUMs, suspect and confirmed COVID-19 patients, facilities for construction personnel who perform emergency works, flood control, and other disaster risk reduction and rehabilitation works, sewerage projects, water service facilities projects, and digital works, health facilities.

Priority public and private construction projects, defined as those that refer to food production, agriculture, fishery, fishport development, energy, housing, communication, water utilities, manufacturing, and BPO, subject to guidelines to be issued by the DPWH

ECQ	100%	*
MECQ	100%	**
GCQ	100%	
MGCQ	100%	



*only major public construction projects

**except small-scale projects

Manufacturing Companies and Suppliers of Equipment or Products Necessary to Perform Construction Works

Such as cement and steel

ECQ	100%	*
MECQ	100%	
GCQ	100%	
MGCQ	100%	



*only suppliers of major public construction projects

Business Process Outsourcing (BPO) and Export-Oriented Companies

Including mining and quarrying

ECQ	100%	*
MECQ	100%	**
GCQ	100%	
MGCQ	100%	



* Work-from-home (WFH); on-site or near-site accommodation or point-to-point shuttle service

** without need to set up on-site or near-site accommodation or point-to-point shuttle service

Printing Presses

Authorized by the Bureau of Internal Revenue (BIR) or other appropriate agencies to print official receipts and other accountable forms

ECQ

100%

MECQ

100%

GCQ

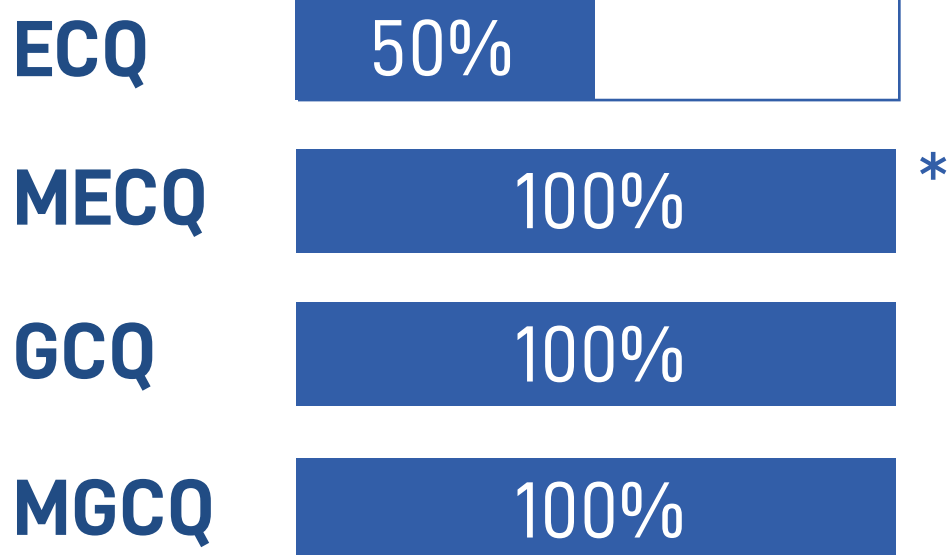
100%

MGCQ

100%



Media Establishments



*without need for Presidential Communications Operations Office (PCOO) accreditation

Other Manufacturing

Beverages (e.g. alcoholic drinks), electrical machinery, wood products, furniture, non-metallic products, textiles/wearing apparels, tobacco products, paper and paper products, rubber and plastic products, coke and refined petroleum products, other non-metallic mineral products, computer, electronic and optical products, electrical equipment, machinery and equipment, motor vehicles, trailers and semi-trailers, other transport equipment, and others

ECQ

not allowed

MECQ

50%

GCQ

100%

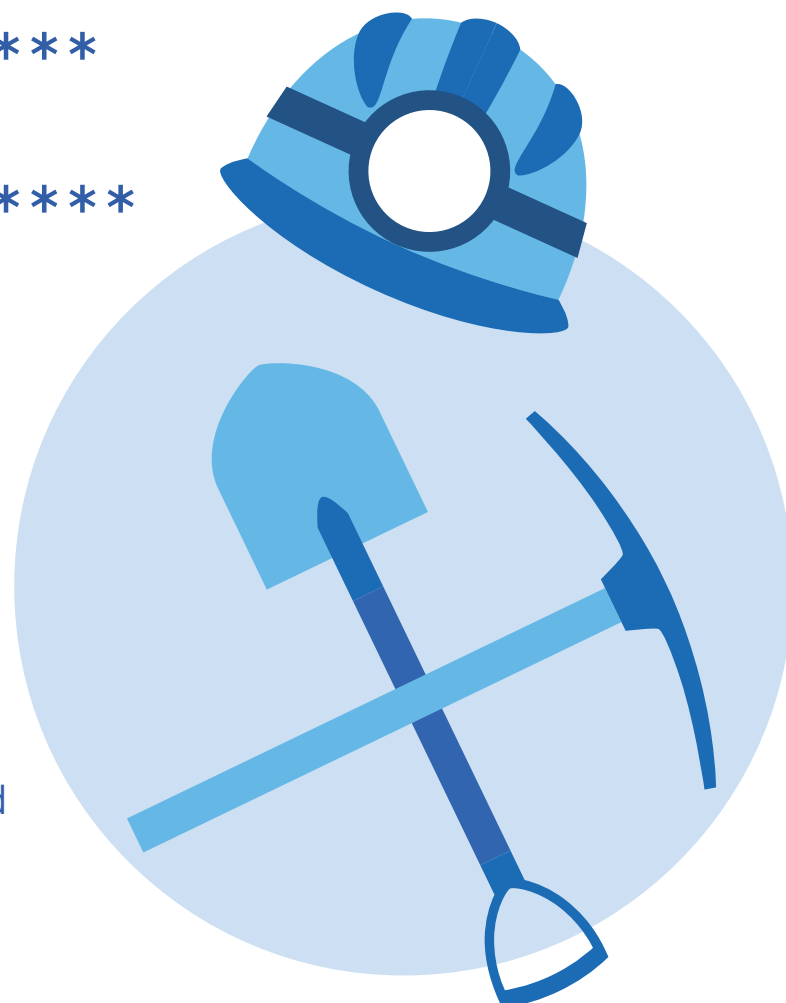
MGCQ

100%



Mining and Quarrying

ECQ	skeleton	*
MECQ	100%	**
GCQ	100%	***
	50 - 100%	****
MGCQ	100%	



- * Work-from-home (WFH); on-site or near-site accommodation or point-to-point shuttle service
- ** only export-oriented mining companies without need for provision of on-site or near-site accommodation
- *** export-oriented
- **** domestic

Electronic Commerce Companies

ECQ

100%

MECQ

100%

GCQ

100%

MGCQ

100%



Postal, Courier, and Delivery Services

For articles or products other than food, medicine, or other essential goods, including clothing, accessories, hardware, house wares, school and office supplies, as well as pet food and other veterinary products

ECQ

skeleton

MECQ

100%

GCQ

100%

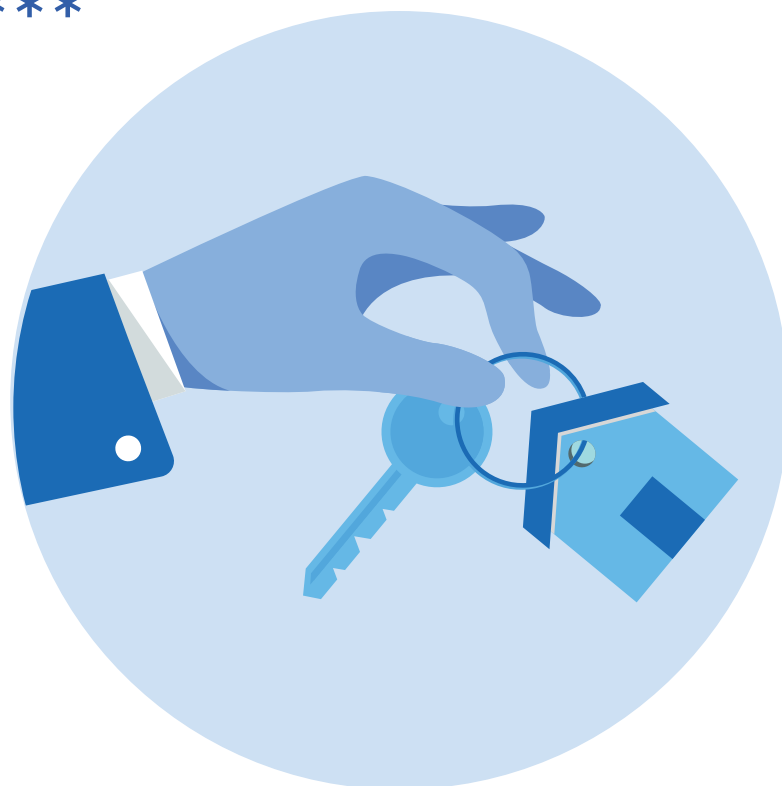
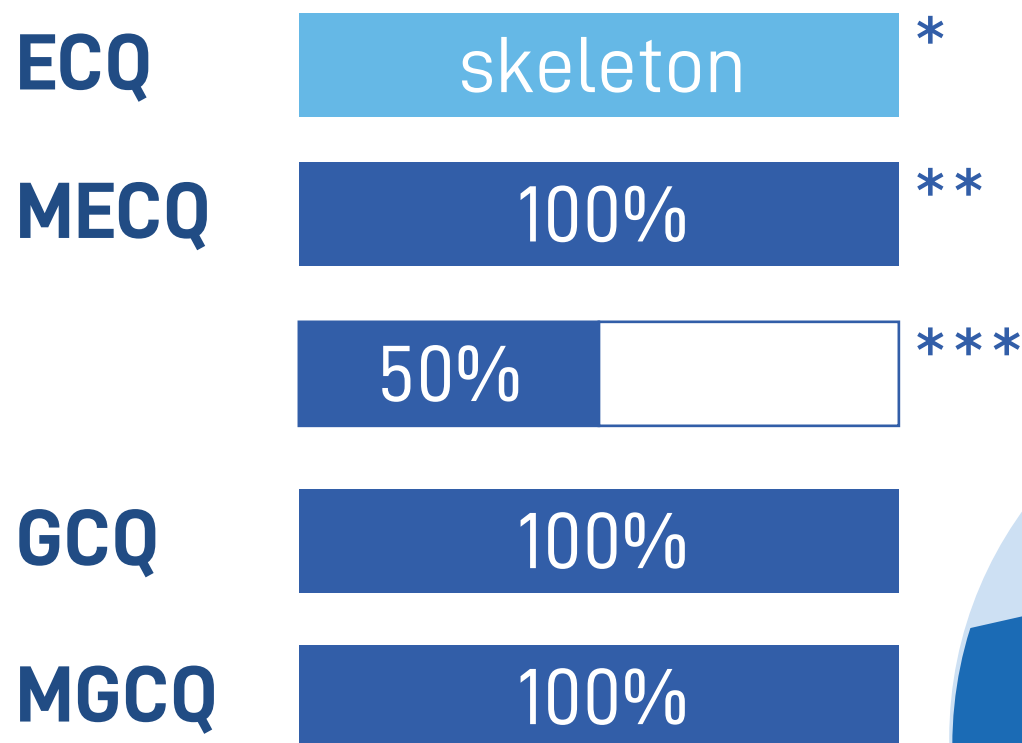
MGCQ

100%



Real Estate Activities

Including parking space leasing companies



* leasing only

** leasing

*** other real estate activities

Housing Service Activities

Such as but not limited to plumbing, roofing, and electrical works

ECQ

skeleton

MECQ

100%

GCQ

100%

MGCQ

100%



Office Administrative and Office Support

Such as photocopying, billing, and record keeping services

ECQ	not allowed
MECQ	50%
GCQ	50 - 100%
MGCQ	100%



Veterinary Activities

ECQ

skeleton

MECQ

100%

GCQ

100%

MGCQ

100%



Security and Investigation Activities

ECQ

skeleton

MECQ

100%

GCQ

100%

MGCQ

100%



Funeral and Embalming Services

ECQ skeleton *

MECQ 100%

GCQ 100%

MGCQ 100%



*except funeral parlors; and provided there is shuttle service and/or housing accommodation for staff

Hotel and other Accommodation Establishments

ECQ	skeleton	*
MECQ	skeleton	*
GCQ	skeleton	*
MGCQ	50%	**



*Only for the following: (a) guests with long-term bookings and existing booking accommodations for foreigners as of 17 March 2020 for Luzon and 01 May 2020 for other areas guests, (b) guests who have existing long-term bookings; (c) distressed Overseas Filipino Workers (OFWs) and stranded Filipinos or foreign nationals; (d) repatriated OFWs in compliance with approved quarantine protocols; (e) non-OFWs who may be required to undergo mandatory facility-based quarantine; and (f) health care workers and other employees from exempted establishments

Provided that accommodation establishments may operate only upon the issuance of a **Certificate of Authority to operate by the Department of Tourism (DOT)**; provided further that hotel operations shall be limited to provision of basic accommodation services; ancillary establishments within the premises such as restaurants, cafes, bars, gyms, spas, and the like shall not be allowed to operate or to provide room service; provided finally that accommodation establishments may prepare: (a) packed meals for distribution to guests; and (b) food orders for take-out and delivery

**only those accredited as provided by law and relevant DOT and DILG issuances may operate, and only upon issuance of a Certificate of Authority to operate by the DOT

Banks, Money Transfer Services, Pawnshops, Microfinance Institutions, and Credit Cooperatives

ECQ

skeleton

MECQ

100%

GCQ

100%

MGCQ

100%



Capital Markets

Such as Bangko Sentral ng Pilipinas, Securities and Exchange Commission, Philippine Dealing & Exchange Corp., and Philippine Depository & Trust Corp.

ECQ

skeleton

MECQ

100%

GCQ

100%

MGCQ

100%



Other Financial Services

Such as money exchange, insurance, reinsurance, lending companies, and non-compulsory pension funding

ECQ

not allowed

MECQ

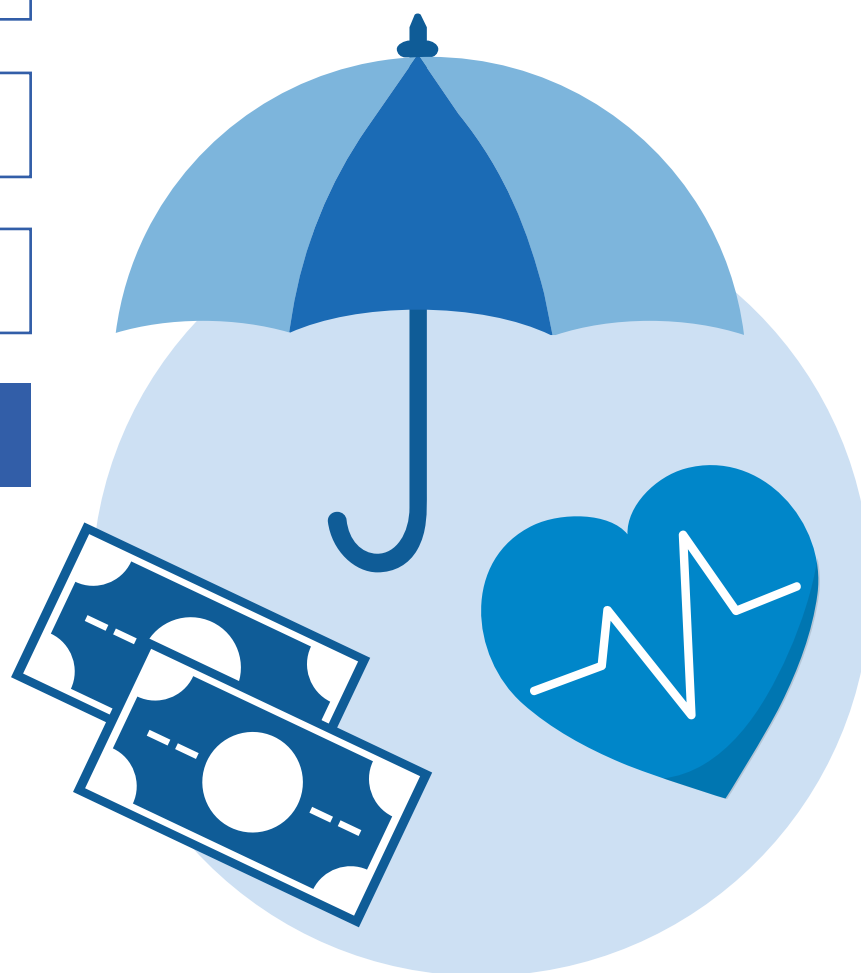
50%

GCQ

50%

MGCQ

100%



Legal and Accounting

ECQ

not allowed

MECQ

50%

GCQ

50%

MGCQ

100%



Management Consultancy Activities

ECQ

not allowed

MECQ

50%

GCQ

50%

MGCQ

100%



Architecture and Engineering Activities; Technical Testing and Analysis

ECQ

not allowed

MECQ

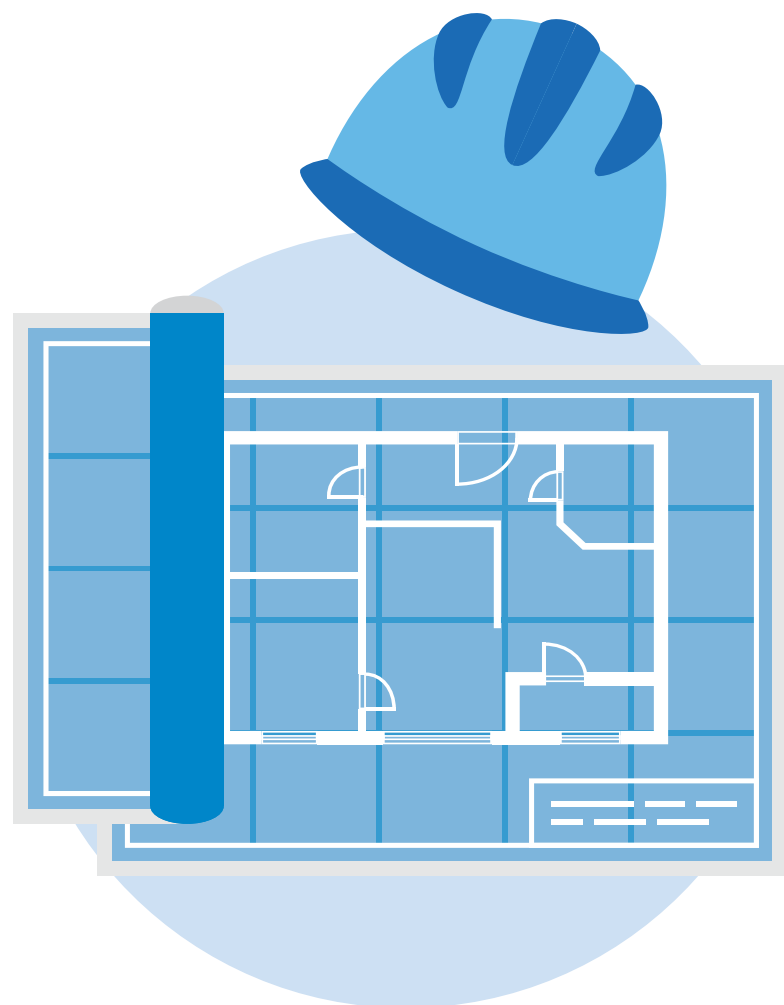
50%

GCQ

50%

MGCQ

100%



Scientific and Research Development

ECQ

not allowed

MECQ

50%

GCQ

50%

MGCQ

100%



Advertising and Market Research

ECQ

not allowed

MECQ

50%

GCQ

50%

MGCQ

100%



Computer Programming, Information Service Activities, and Other Related Activities

Such as writing, modifying, testing and supporting software, planning and designing computer systems; data processing and hosting activities

ECQ

not allowed

MECQ

50%

GCQ

50%

MGCQ

100%



Rental and Leasing Activities

Other than real estate, such as vehicle rental, equipment rental for permitted sectors plastic, glass, metal wood, and ceramics

ECQ

not allowed

MECQ

100%

GCQ

100%

MGCQ

100%



Publishing and Printing Services

Such as printing of newspapers, magazines, and other periodicals, books, brochures, manuscripts, posters, maps, atlases, advertising catalogues, prospectuses, etc; printing directly onto textiles, plastic, glass, metal wood, and ceramics

ECQ

not allowed

MECQ

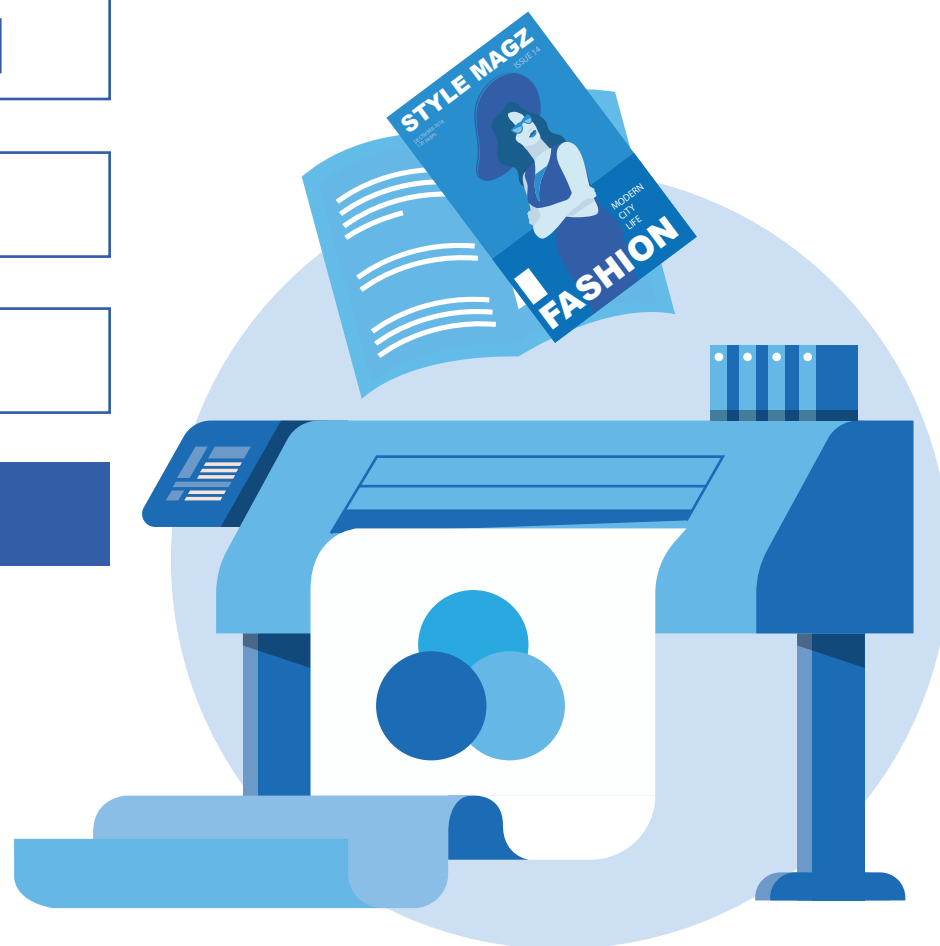
50%

GCQ

50%

MGCQ

100%



Film, Music, and TV Production

ECQ	not allowed
MECQ	50%
GCQ	50%
MGCQ	100%



Employment Activities

That involve recruitment and placement for permitted sectors

ECQ

not allowed

MECQ

100%

GCQ

100%

MGCQ

100%



Recruitment and Placement Agencies for Overseas Employment

ECQ

not allowed

MECQ

50%

GCQ

50%

MGCQ

100%



Other Services

Such as photography services; fashion, industrial, graphic, and interior design

ECQ

not allowed

MECQ

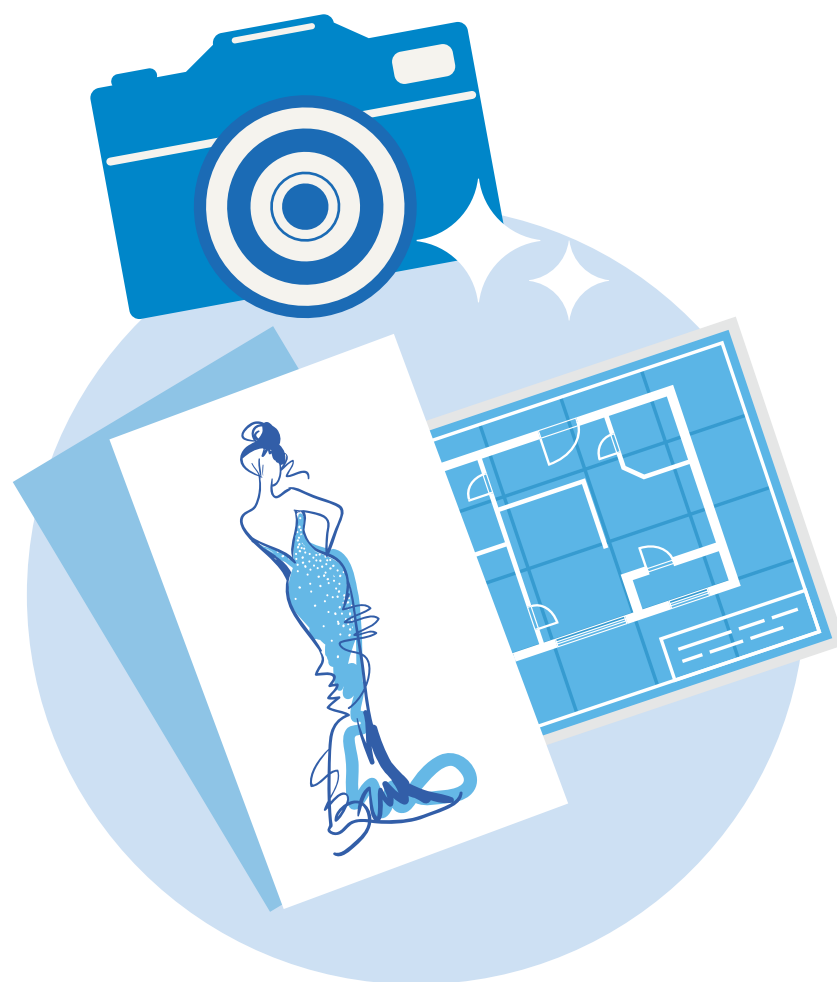
50%

GCQ

50%

MGCQ

100%



Wholesale and Retail Trade of Motor Vehicles, Motorcycles, and Bicycles

Including their parts and components

ECQ	not allowed
MECQ	50%
GCQ	50%
MGCQ	100%



Repair of Motor Vehicles, Motorcycles and Bicycles

Including vulcanizing shops, battery repair shops, auto repair shops, car wash

ECQ

not allowed

MECQ

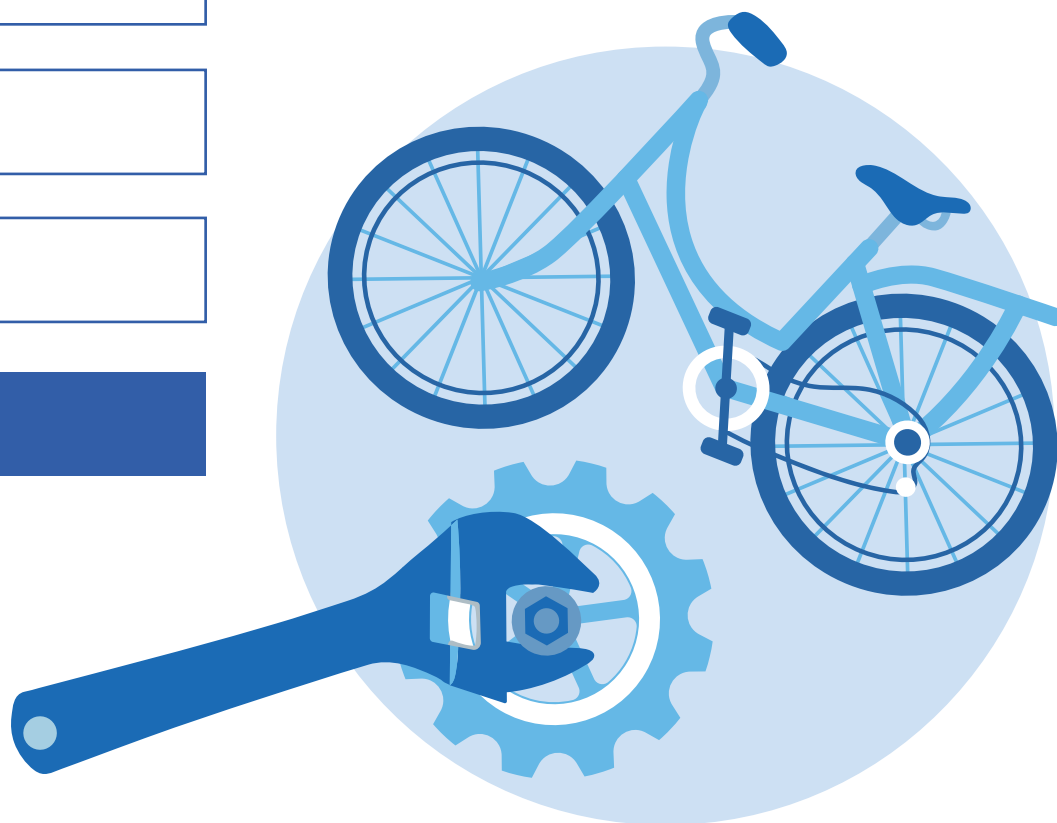
50%

GCQ

50%

MGCQ

100%



Malls and Commercial Centers (non-leisure only)

Subject to guidelines to be issued by DTI

ECQ

not allowed

MECQ

50%

GCQ

50%

MGCQ

100%



Dining/Restaurants

ECQ	50%	*
MECQ	50%	*
GCQ	100%	**
MGCQ	100%	***



*delivery and take-out only

** dine-in allowed provided seating capacity **may not exceed 30%**

*** dine-in allowed provided seating capacity **may not exceed 50%**

Mall-based Government Frontline Services

ECQ

skeleton

MECQ

skeleton

GCQ

100%

MGCQ

100%



Hardware Stores

ECQ

not allowed

MECQ

50%

GCQ

50%

MGCQ

100%



Clothing and Accessories

ECQ

not allowed

MECQ

50%

GCQ

50%

MGCQ

100%



Bookstores and School and Office Supplies Stores

ECQ

not allowed

MECQ

50%

GCQ

50%

MGCQ

100%



Baby or Infant Care Supplies Stores

ECQ

not allowed

MECQ

50%

GCQ

50%

MGCQ

100%



Pet Shops, Pet Food, and Pet Care Supplies

ECQ

not allowed

MECQ

50%

GCQ

50%

MGCQ

100%



IT, Communications, and Electronic Equipment

ECQ

not allowed

MECQ

50%

GCQ

50%

MGCQ

100%



Flower, Jewelry, Novelty, Antique, Perfume Shops

ECQ

not allowed

MECQ

50%

GCQ

50%

MGCQ

100%



Toy Stores

with playgrounds and amusement area closed

ECQ

not allowed

MECQ

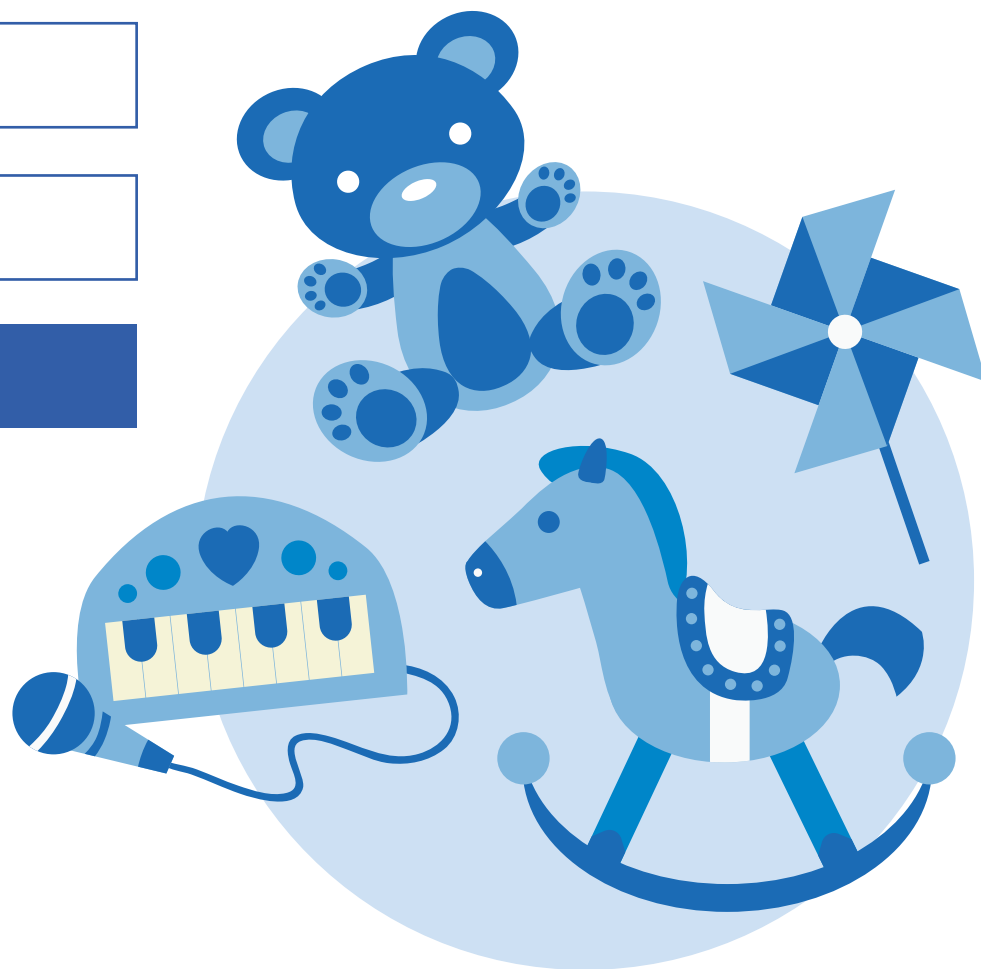
50%

GCQ

50%

MGCQ

100%



Music Stores

ECQ

not allowed

MECQ

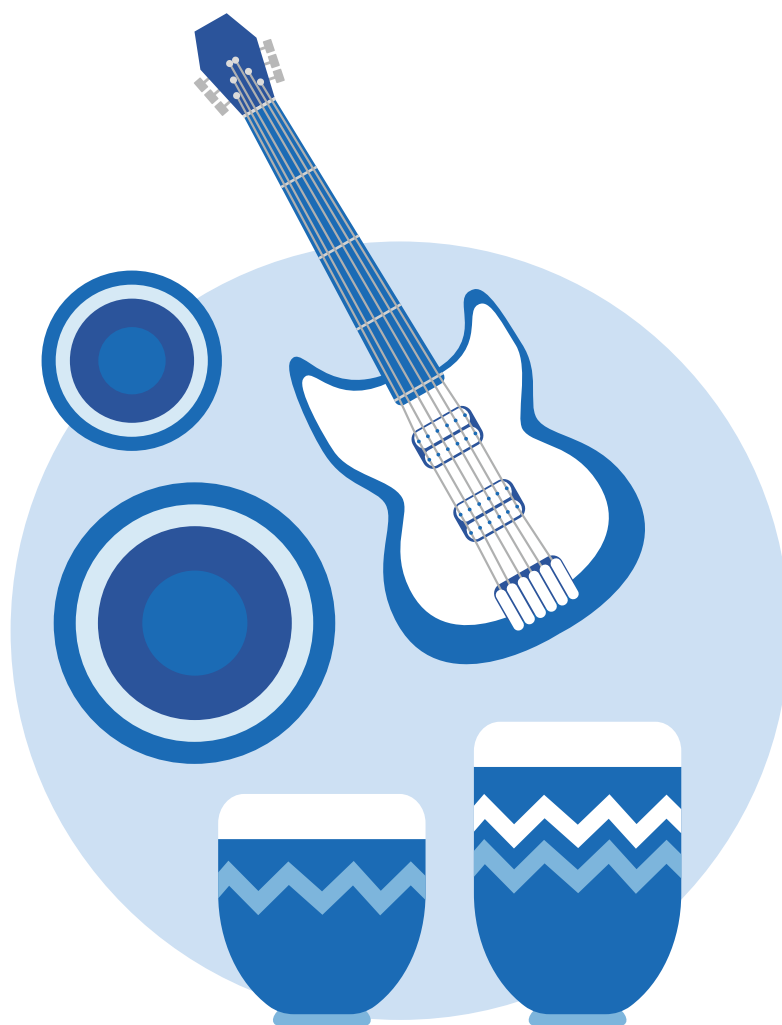
50%

GCQ

50%

MGCQ

100%



Art Galleries

Selling only

ECQ

not allowed

MECQ

50%

GCQ

50%

MGCQ

100%



Firearms and Ammunition Trading Establishment

ECQ

not allowed

MECQ

50%

*

GCQ

50%

*

MGCQ

100%



*subject to strict regulation of the Philippine National Police-Firearms and Explosives Office

Barbershops and Salons

Provided that they are compliant with DTI-issued protocols

ECQ

not allowed

MECQ

not allowed

GCQ

30-50%

*

MGCQ

50-100%

**



* 30% beginning June 7; to gradually increase every two weeks; and limited to basic haircutting services

** increase of up to 100% capacity after three (3) weeks

All Other Public and Private Construction Projects

Subject to strict compliance to the issued construction safety guidelines for the implementation of infrastructure projects during the COVID-19 pandemic by the DPWH

ECQ

not allowed

MECQ

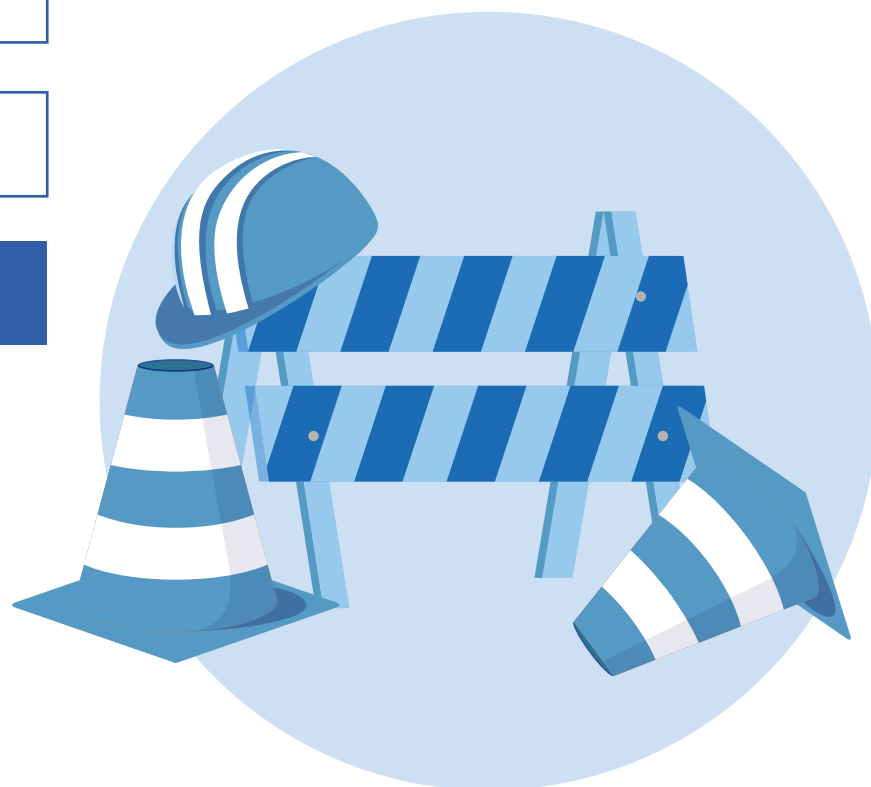
not allowed

GCQ

50%

MGCQ

100%

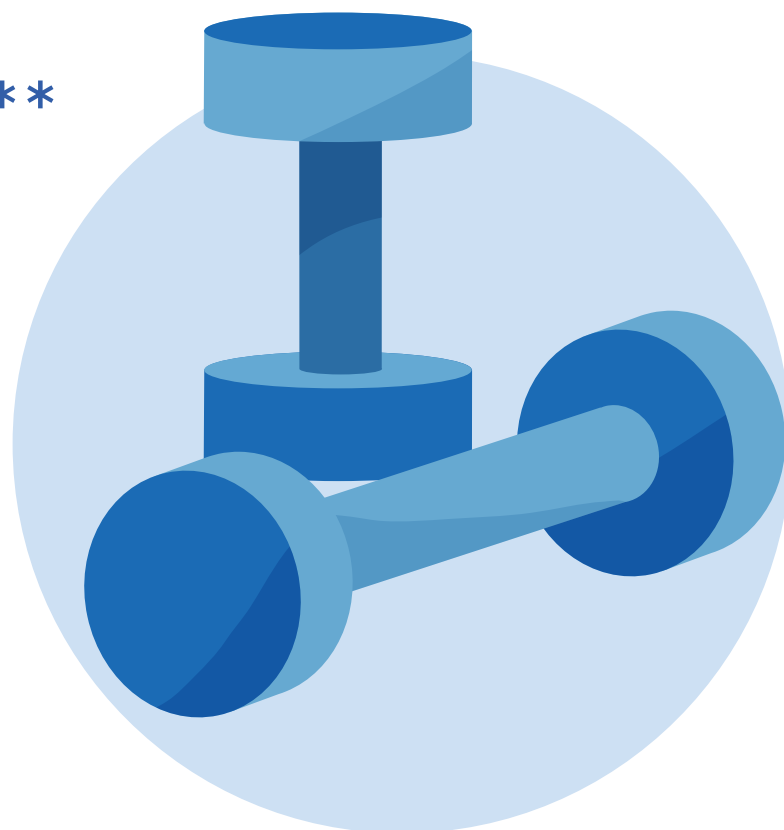


Gyms/Fitness Studios and Sports Facilities

ECQ	not allowed	
MECQ	not allowed	
GCQ	skeleton	*
MGCQ	50%	**

* Only those outdoor facilities for non-contact sports and other forms of exercise such as walking, jogging, running, biking, golf, swimming, tennis, badminton, equestrian, range shooting, and skateboarding; no sharing of equipment, where applicable

** Outdoor and indoor sports, facilities for non-contact sports, and other forms of exercise



Internet and Computer Shops

Subject to strict health protocols

ECQ not allowed

MECQ not allowed

GCQ not allowed

MGCQ 50% *



*only for work or educational purposes

Other Education and Educational Support Establishments

Testing centers, tutorial and review centers; language, driving, dance/acting/voice schools

ECQ

not allowed

MECQ

not allowed

GCQ

not allowed

MGCQ

50%



Entertainment Industries

Such as cinemas, theaters, and karaoke bars

ECQ

not allowed

MECQ

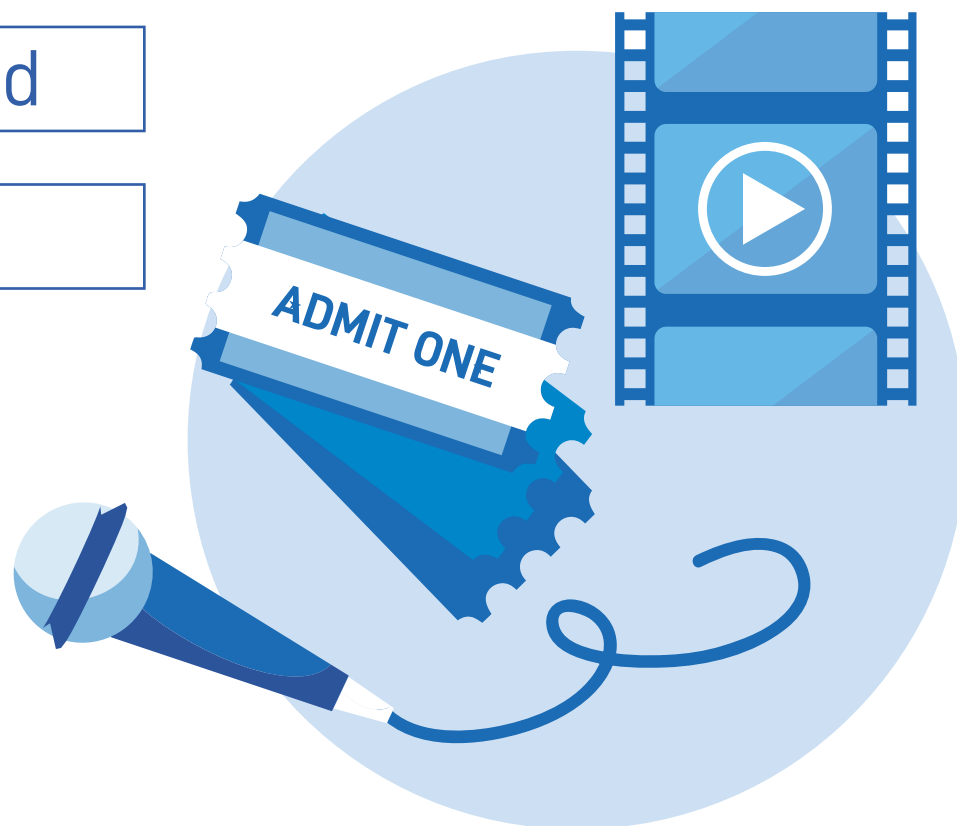
not allowed

GCQ

not allowed

MGCQ

50%



Kids' Amusement Industries

Such as playrooms and rides

ECQ

not allowed

MECQ

not allowed

GCQ

not allowed

MGCQ

50%



Libraries, Archives, Museums, and Cultural Centers

ECQ

not allowed

MECQ

not allowed

GCQ

not allowed

MGCQ

50%



Tourist Destinations

Such as water parks, beaches, and resorts

ECQ

not allowed

MECQ

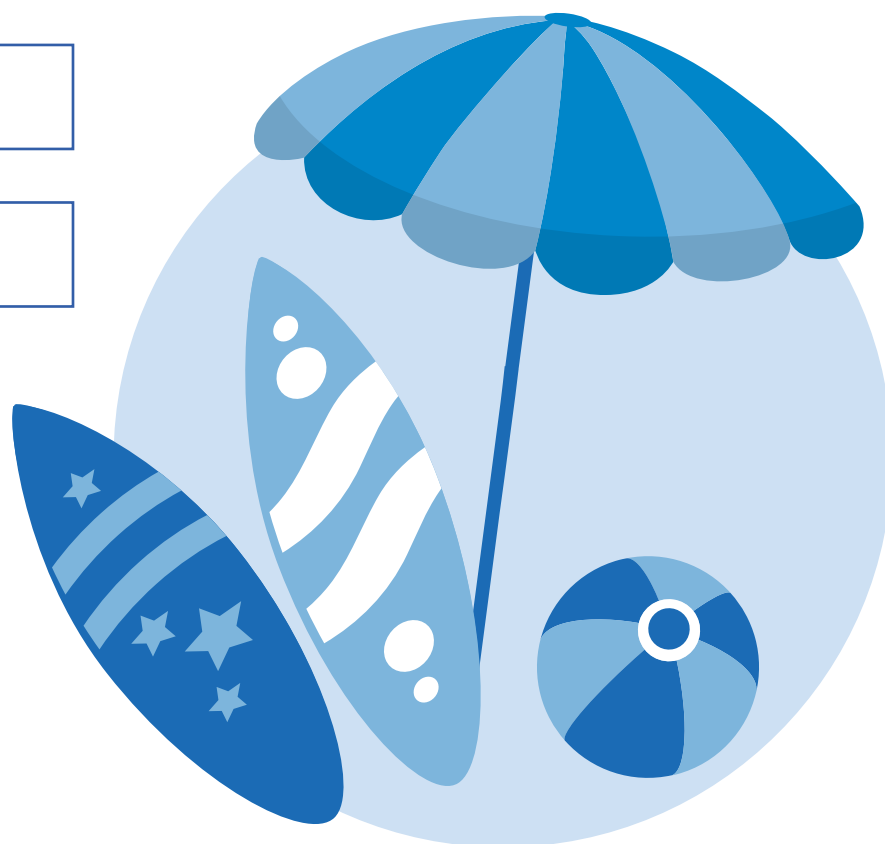
not allowed

GCQ

not allowed

MGCQ

50%



Travel Agencies, Tour Operators, Reservation Services, and Related Activities

ECQ

not allowed

MECQ

not allowed

GCQ

not allowed

MGCQ

50%



Other Personal Care Services

Such as massage parlors, sauna, facial care, and waxing

ECQ

not allowed

MECQ

not allowed

GCQ

not allowed

MGCQ

50%



Pet Grooming Services

ECQ

not allowed

MECQ

not allowed

GCQ

not allowed

MGCQ

50%

